

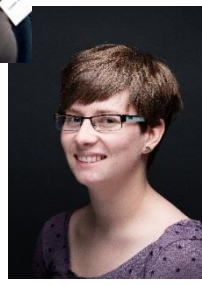
The UWE Rheumatology Research Team



Jo Robson
Consultant Senior Lecturer

Emma Dures
Associate Professor

Mwidimi Ndosi
Senior Lecturer



VERSUS ARTHRITIS

Bristol-Myers Squibb

Above & Beyond eular
Fundraising for Bristol city centre hospitals

Pfizer

NOVARTIS

UWE Bristol | University of the West of England

NHS
National Institute for Health Research

The UWE Rheumatology Team

The UWE Rheumatology Team is a multi-disciplinary group of researchers from the Department of Nursing and Midwifery, led by Associate Professor Emma Dures. We are co-located with the clinical team in the Rheumatology Department of the Bristol Royal Infirmary and conduct applied research that addresses questions from clinical practice in relation to inflammatory rheumatic diseases.

Our focus is on outcomes important to patients, the psychological impact of inflammatory rheumatic conditions, the provision of support for self-management, fatigue, and nurse-led care. We use a range of quantitative, qualitative and mixed methods study designs. Collaboration with Patient Research Partners is integral to all our research. We work with national and international collaborators from nursing, medicine, patient involvement, psychology, and allied health professionals (including physiotherapy and occupational therapy).

Team Members

Emma Dures	Associate Professor in Rheumatology and Self-Management
Jo Robson	Consultant Senior Lecturer and Rheumatologist
Mwidimi Ndosu	Senior Lecturer in Rheumatology Nursing (New Blood Post)
Alice Berry	Research Fellow in Process Evaluation
Andrew Hunt	Patient Research Partner
Anne-Marie Sweeney	UWE PhD Student
Bethan Jones	Versus Arthritis UK PhD Student
Celia Almeida	Research Associate
Chris Silverthorne	Research Associate
Jen Orme	Research Team Administrator
Pam Richards	Patient Research Partner
Sarah Bennett	Research Associate
Sarah Hewlett	Professor Emerita
Susan Bridgewater	Feasibility Study Co-Ordinator

Key UWE Collaborators

- Professor Fiona Cramp, Director of the Centre for Health and Clinical Research
- Dr Caroline Flurey, Associate Head of Department and Senior Lecturer in Public health

Summary (2015-2020)

- Principle Investigators and Co-Applicants on over £11 million in research grants
- Over 60 peer reviewed papers (average 12 per year)
- Committee members on approximately 10 funding or policy committees of national and international charities, professional bodies and funding bodies
- Reviewers for over 20 journals and on the Editorial Board of three journals
- Academic collaborators include universities in Aberdeen, Bath, Birmingham, Bristol, Cardiff, Keele, Leeds, Manchester, Salford, Glasgow, Plymouth, and Southampton
- Clinical collaborators include hospitals in Chertsey, Weston, Bristol, Southmead, Poole, Cardiff, Portsmouth, Plymouth, Preston, Stoke, Northumberland and Torbay
- International collaborators in Australia, Canada, Denmark, France, Germany, the Netherlands, Portugal, Spain, Sweden, and the USA

