

Abdominal Aortic Aneurysm Duplex

What is it?

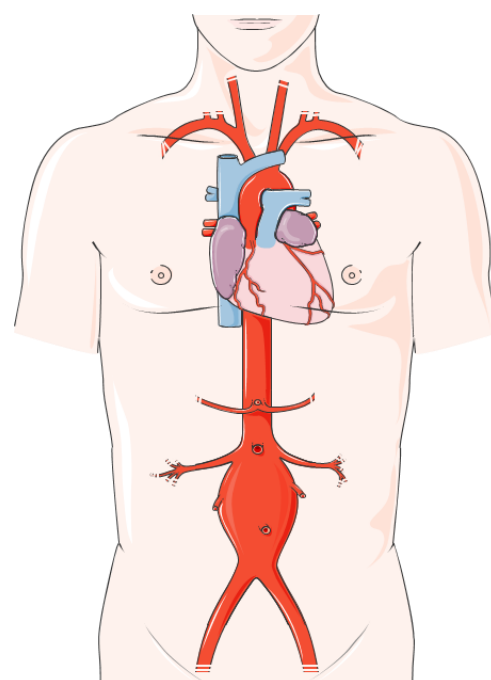
An abdominal aortic aneurysm duplex is an ultrasound scan of your tummy looking at the main artery in your tummy, called your aorta. Your aorta delivers blood from your heart to your legs.

Why have you been referred for this test?

Your doctor or nurse would like us to assess if you have an Abdominal Aortic Aneurysm (AAA) or not. An AAA is a bulge or swelling of the aorta making it larger than it should be.

You may have been referred because you have a family history of aneurysms, your doctor thinks you are risk of developing an aneurysm or you have symptoms such as:

- Painful tummy
- A pulsing sensation in your tummy
- Lower back pain



What happens during the test?

The scan will be carried out in one of our scanning rooms. You will be asked to lie on a couch and uncover your tummy.

Ultrasound gel and an ultrasound probe will be placed on your tummy. The scientist will apply pressure to your tummy. Please tell the scientist if you feel any discomfort during the scan.

The scan takes 20-30 minutes. At the end of the scan the scientist will inform you of the results and what will happen next.

If you are attending your appointment from home, you are usually free to go home after the scan.

VASCULAR SCIENCE UNIT

A225 Bristol Royal Infirmary, Bristol, BS2 8HW
Tel: 0117 342 7530