

December 2017

Welcome to this edition of the R&I monthly e-bulletin. If you have an item to add to the next bulletin, please [email us](#) by Wednesday 17th January 2018.

We will shortly be writing to each of the research groups responsible for our specialties, to plan our work for the financial year 2018/19. As a partner organisation within the Local Clinical Research Network (LCRN) we have the opportunity to help shape the network's annual plan for 2018/19. Importantly, this is our chance to agree challenging, yet achievable, recruitment targets in each of our specialties. These targets will support the LCRN's High Level Objectives, whose aims are to:

- Make high quality research available for a wide range of patients, across both primary and secondary care, including in priority areas such as Dementias and Neurodegeneration
- Set research up more quickly
- Deliver research on time and to target
- Support the life sciences industry

We will be asking you for target recruitment numbers for 2018/19 in each of your specialties, which we will collate and pass on to the network. Please be ambitious in your target setting; recruitment to NIHR portfolio studies drives the income we receive and we therefore need to be ambitious in our plans. That said, we know that research can be increasingly complex and resource intensive to set up and deliver. If you need help in prioritising your research portfolio or identifying suitable studies, please contact a member of the team.

Thank you all for your hard work – this has been reflected in how well we are doing in initiating and delivering research, which will continue to be a priority for us as we enter 2018.



This month's message from
Diana Benton
Head of Research & Innovation

Contents List

1. [News](#)
2. [UHBristol performance](#)
3. [Celebrating Successes](#)
4. [Grants & Upcoming Awards](#)
5. [Events, Training and Employment](#)

1. News

HRA e-learning resources

The Health Research Authority have a growing programme of [eLearning modules](#) designed to support our staff, the research community, Research Ethics Committees (RECs) and Confidentiality Advisory Group (CAG) members.

1. [Medical devices](#)
2. [Use of the HRA Schedule of Events](#)
3. [Research involving participants lacking mental capacity](#)
4. [Research involving exposure to ionising radiation](#)
5. [Research involving human tissue](#)
6. [Confidentiality and information governance considerations in research](#)



UK Clinical Trials Gateway

The NIHR Clinical Research Network is looking to improve the UK Clinical Trials Gateway.

What is the UK Clinical Trials Gateway?

The UKCTG service has traditionally provided public and professional users with information on what it means to participate in a clinical trial and uses links to two publicly available third party databases - the ISRCTN registry and ClinicalTrials.gov - to provide information on clinical trials recruiting across the UK via a 'Trial Search' function.

How can I help develop the service?

We are looking for input from the research community on future functionality that might be of use to researchers in the UK. Please click on the link below to access the survey.

[UKCTG Stakeholder Engagement Questionnaire](#)

The questionnaire is aimed at CIs, PIs and other researchers (both clinical and non-clinical) working on research studies across the UK.

What if I am not a researcher?

There will be further engagement activities taking place in the coming months which will be aimed at other stakeholder groups such as patients, carers and the public, charities and funders. If you would like to hear more about these or have a specific question about UKCTG please email ukctg@nihr.ac.uk



Understanding the impact of NIHR investment in research

Everyone involved in the health research ecosystem needs to demonstrate the difference that the research we undertake, support, fund and enable makes. The NIHR is no different. To do this successfully we need to gather good information. The NIHR, and many other funders, uses a tool called [Researchfish](#) to collect information on the outputs and impacts of research. Organisations that host NIHR research and personal awards (not infrastructure awards) are required to report annually through Researchfish whilst the award is active and for 5 years after completion. **The next submission window will open 5th February and close 4pm 15th March 2018.**

The information we gather through Researchfish helps the NIHR to make the case for continued investment in applied health research, respond to requests for information and to build impact case studies. Researchers and host organisations can also access their information and use this to support their own impact assessment activities.

More information about the submission www.nihr.ac.uk/researchfish. There is help and support available to organisations that host NIHR contracts and for researchers working on NIHR awards. NIHR will be holding a webinar for host organisations on [10th January](#) and one for researchers on [14th February 2018](#).



Research Design Service South West e-bulletin

Bulletins and more information – [click here](#)

Research Design Service
South West



National Institute for
Health Research

NIHR – CRN West of England

Latest news – [click here](#)



National Institute for
Health Research

CLAHRC West news

Latest news – [click here](#)

CLAHRC West

Collaboration for Leadership in Applied Health
Research and Care West

Bristol Health Partners

BHP latest news – [click here](#)

**Bristol Health
Partners**

West of England AHSN

News and views – [click here](#)



Better involvement · Better research · Better health

People in Health West of England (PHWE)

Latest newsflash – [click here](#)

Elizabeth Blackwell Institute Newsletter

Latest news – [click here](#)



Elizabeth Blackwell
Institute

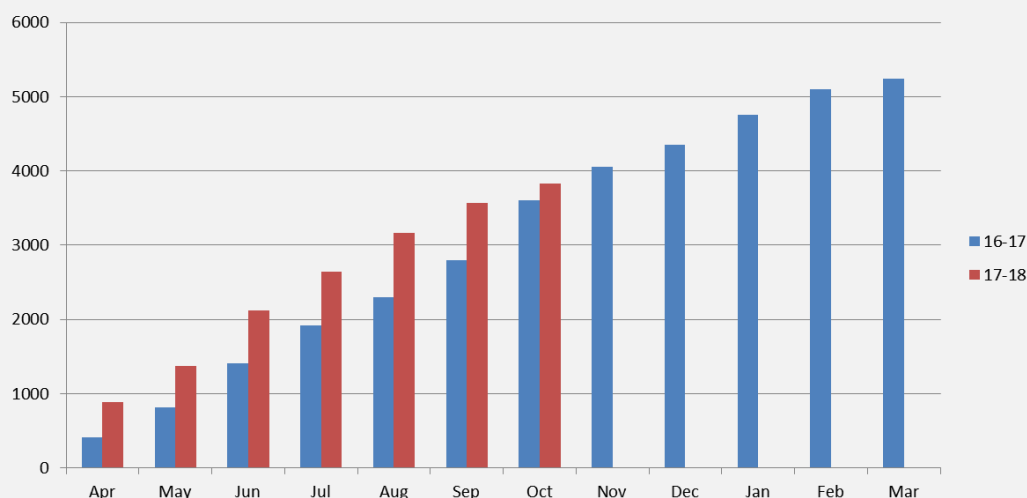
CTEU newsletter

Clinical Trials and Evaluation Unit news – [click here](#)



2. UHBristol Performance

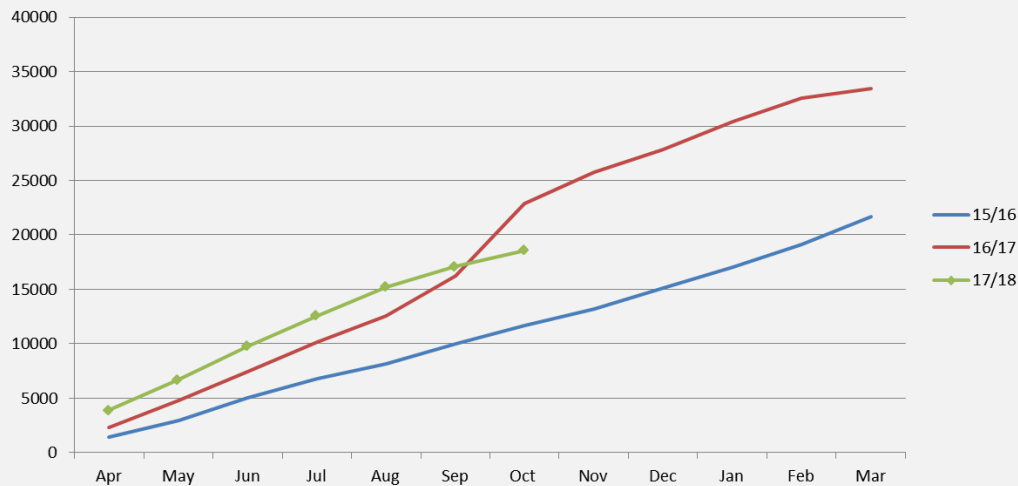
Cumulative Recruitment in Commercial and Non-Commercial NIHR studies



The above is taken from the NIHR portfolio report which is issued with a 4 week lag of data.

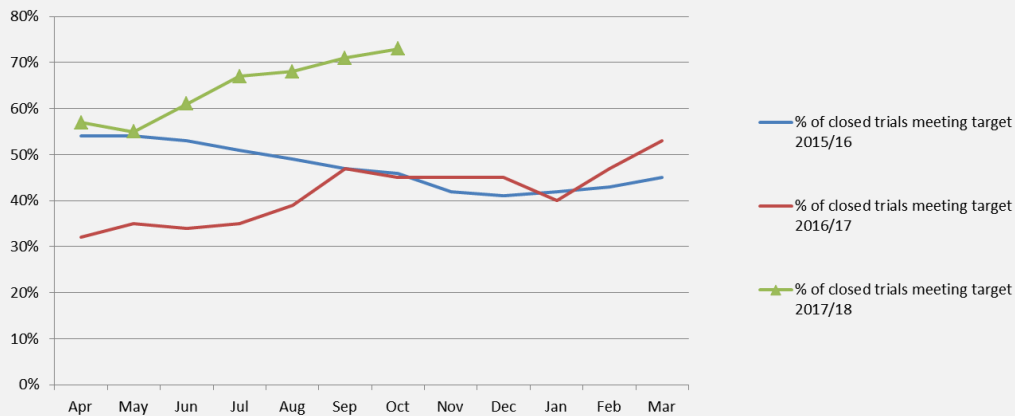


Cumulative Weighted Recruitment to date 2017/18 compared to 2016/17 and 2015/16



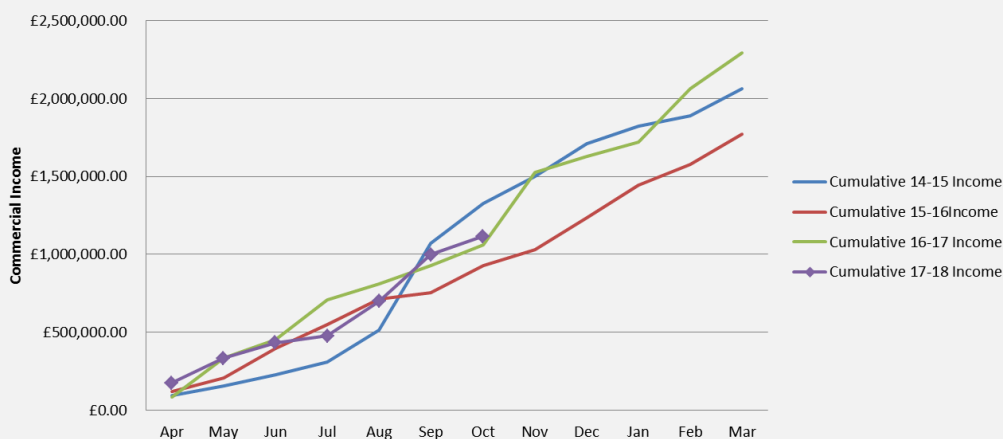
This data is extracted from the NIHR portfolio report which issued with a 4 week lag of data.

Percentage of commercial clinical trials closed to recruitment during the reporting period meeting time to target



This data is taken from EDGE on a rolling 12 months basis. Latest figures therefore show number of clinical trials closed to recruitment in reporting period between 01/11/2016 and 31/10/2017 meeting time to target (i.e. the preceding 12 months). The adjusted line excludes trials where recruitment to target cannot be influenced locally (e.g. very rare patient group where we may not see any patients at all or follow-on/extension trials) and where the defined recruitment window was closed earlier than the date provided in the contract.

Monthly Commercial Research Income - Cumulative Commercial Income



Actual income data derived from monthly reports provided by finance on value of invoices raised.

3. Celebrating successes

First global patient recruited to the Phase 1 Study CYP-001 for the Treatment of Acute Graft vs Host Disease

Congratulations to the Bristol Haematology and Oncology Centre on recruiting the first global patient in the commercial study:

An Open-Label Phase 1 Study to Investigate the Safety and Efficacy of CYP-001 for the Treatment of Adults With Steroid-Resistant Acute Graft Versus Host Disease

First global recruitment is a significant achievement and one which is only delivered through effective and well managed feasibility and study set-up. Well done to everyone involved. (Principal Investigator: Dr James Griffin)


University Hospitals Bristol
NHS Foundation Trust


National Institute for
Health Research

4. Grants & Upcoming Awards

Funding and support round-up

December 2017 - Latest funding opportunities – [click here](#)


National Institute for
Health Research

Funding Finder

The West of England Academic Health Science Network – [Funding Finder](#)



David Telling trust announce calls for funding

The David Telling trust is delighted to announce calls for funding for research time and proposals within UHBristol and NBT.


National Institute for
Health Research

1. Clinical research fellow and new consultant sessional awards

These will be awarded to fund a period of no more than 12 months research activity for clinicians in training or newly appointed consultants. The objective is to allow the necessary introductory research time to generate the initial data and expertise needed for a larger research grant application and if appropriate to fund a higher degree. It is anticipated that research time will be part funded by the David Telling trust; in addition to any service commitment funded by the employing trust which for consultants must also be matched with research time; and/or funding will also be sought from the Clinical research network West of England for time to develop and perform NIHR portfolio work. These awards thus offer the possibility of developing a research career that can be integrated into clinical training pathways and clinical practice.

Applicants are strongly advised to discuss with Stephen Falk before applying. These sessions are designed to be funded by the charity together with other sources

2. £25000 Pump-priming Grants

These are pump priming awards. They are flexible to get new researchers of all professions started. I attach information and an application form and the closing date for applications will be 31st January 2018. Please note that we can accept applications for both research grants and medical equipment for up to £25000, although more may be available for medical equipment if there is a strong case for it (there should be clear patient benefit and a reason why the NHS will not fund it).

Closing date for applications is **31st January 2018**.

Stephen Falk, Consultant Oncologist – Chairman, Advisory Board, David Telling Charitable Trust. Tel 0117 3422461. Stephen.falk@UH Bristol.nhs.uk

5. Events, Training and Employment

SWEAT 18 – Emergency Medicine Conference

You are invited to the Standout Emergency Medicine Conference in the Southwest - SWEAT18 - South.West.Emergency.Academic.Team.
Bristol Zoo, **Wednesday 7th March 2018**.

An annual conference packed full of engaging talks, interesting ideas, research opportunities and research networking. If you are at all involved in any aspect of Emergency Medicine you are more than welcome to come along and get involved.

Tickets are free but selling fast. So please book study leave and tickets now!

Have a project to present? [click here](#). Tickets and information, [click here](#)
Contact: sweat18resus@gmail.com



CLAHRC West training courses

Basic statistics and data interpretation

Tuesday 20 February 2018, Whitefriars, Bristol
Closing date: Monday 8 January 2018. To apply [click here](#)

Realist evaluation:an introduction

Monday 26 February 2018, Whitefriars, Bristol
Closing date: Monday 15 January 2018. To apply [click here](#)

How to win at Twitter

Wednesday 7 March 2018, Whitefriars, Bristol
Closing date: Monday 22 January 2018. To apply [click here](#)

Getting your article published: a two day course

8 March 2018 & 15 March 2018
Closing date: Monday 22 January. To apply [click here](#)



[Go to top](#)