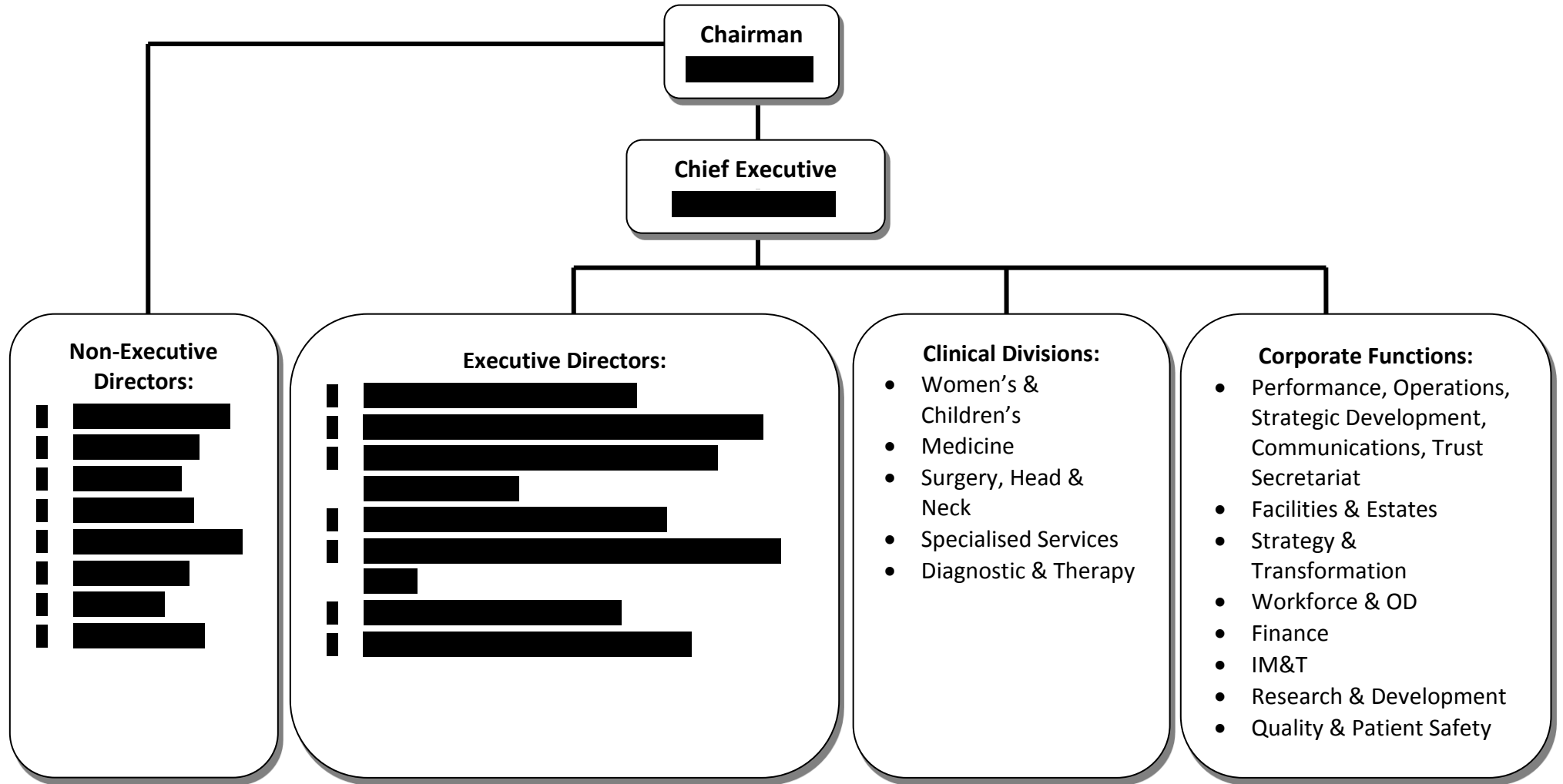
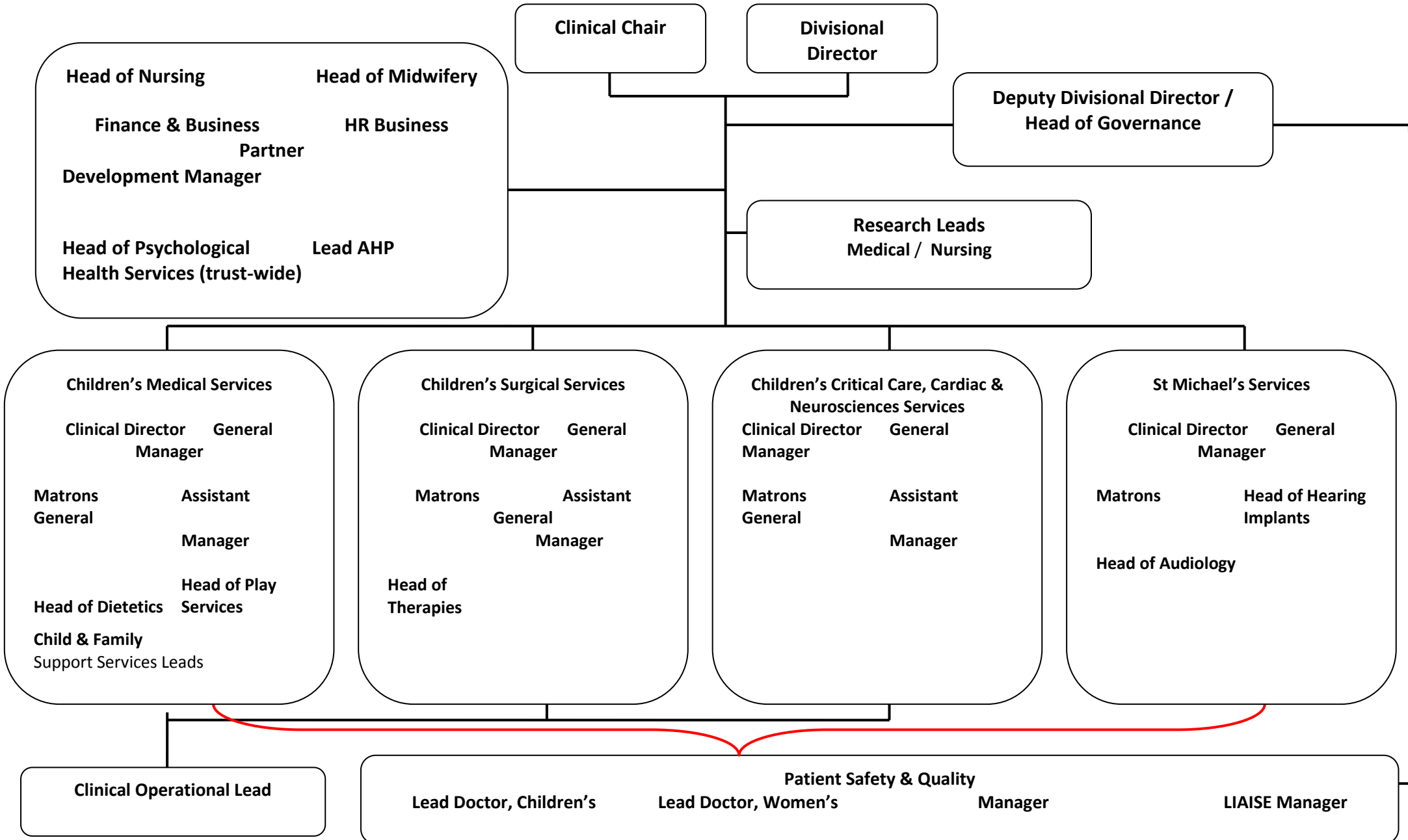


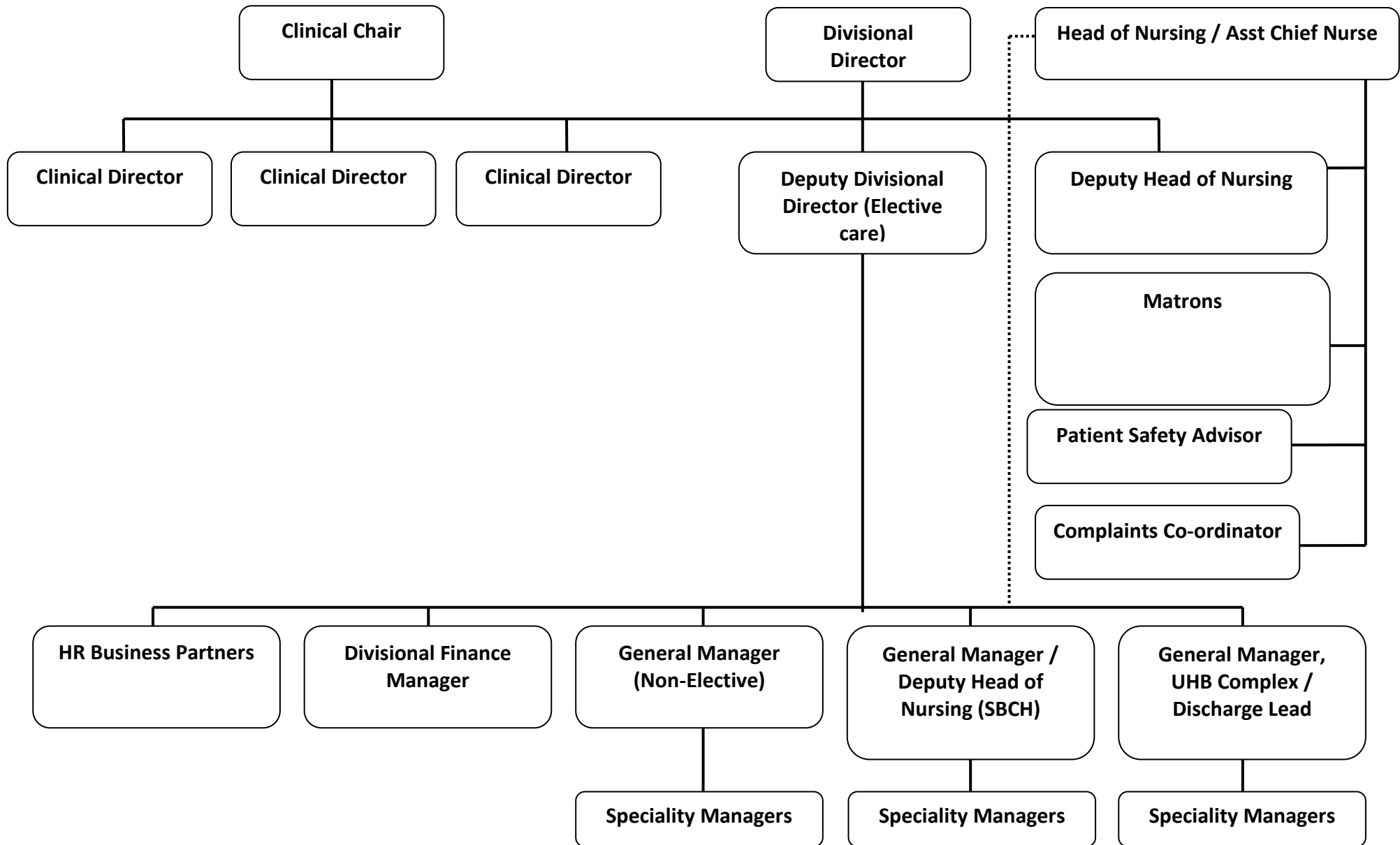
University Hospitals Bristol NHS Foundation Trust – Organisation Structure



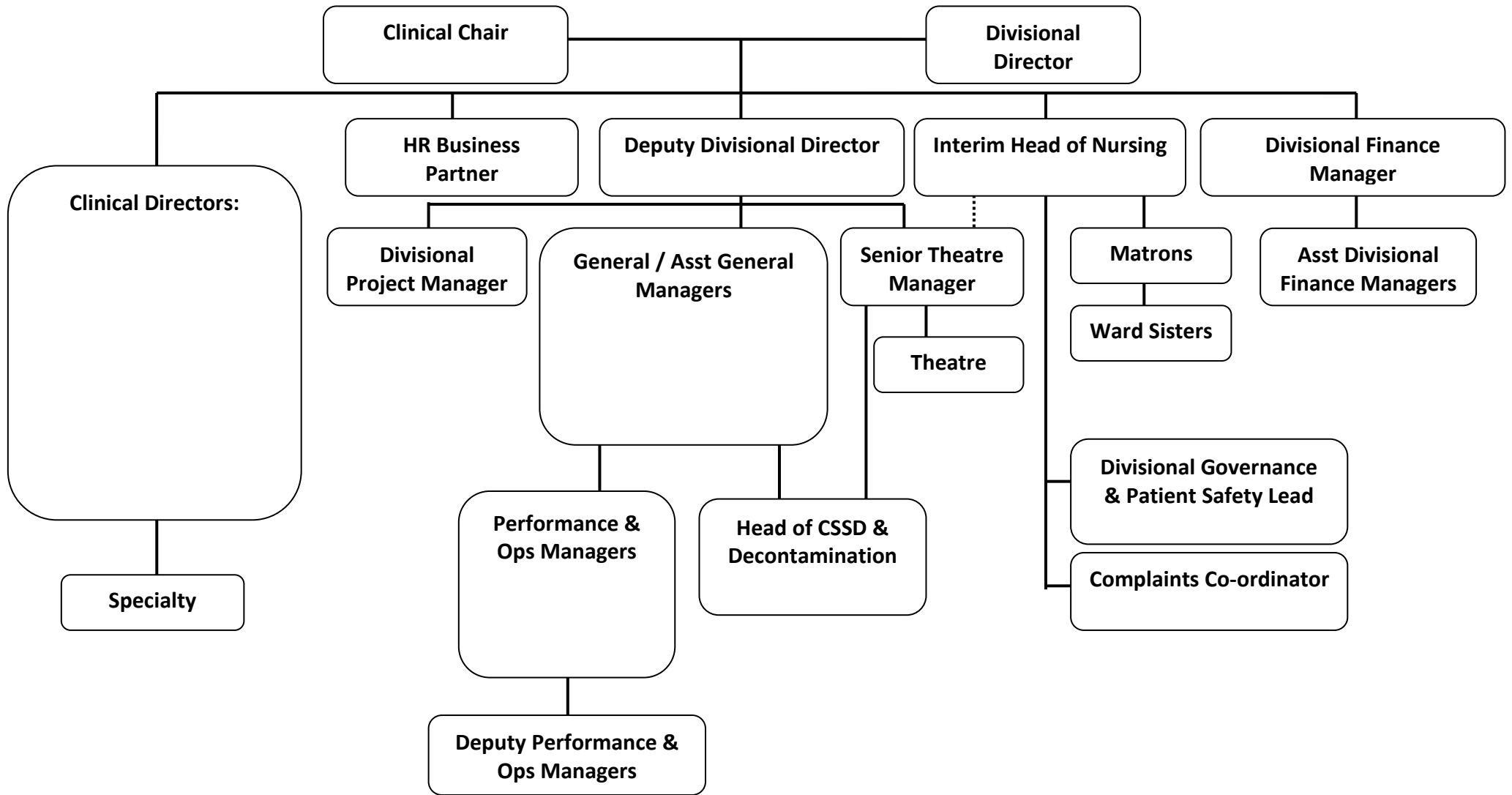
Division of Women's & Children's



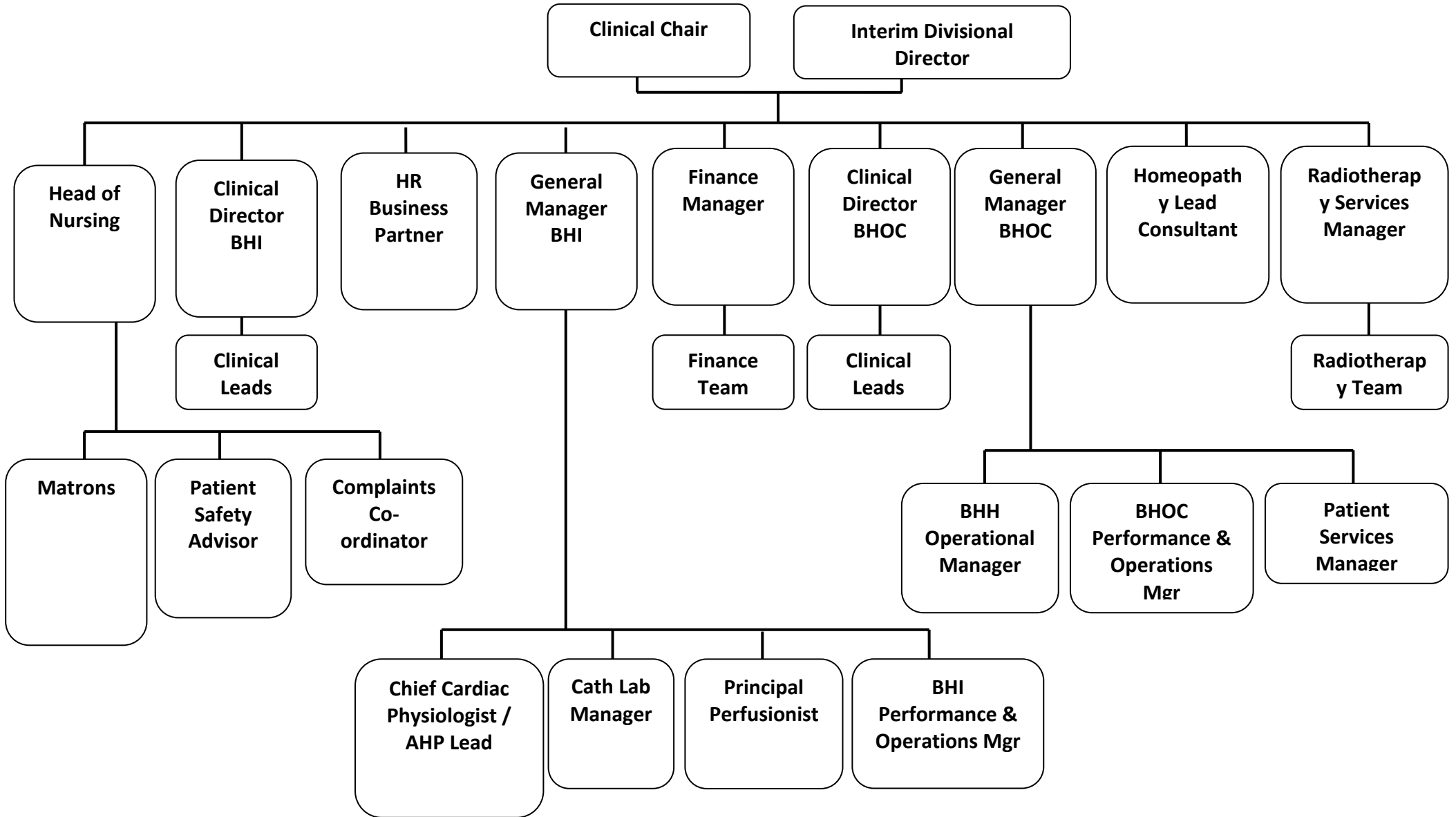
Division of Medicine



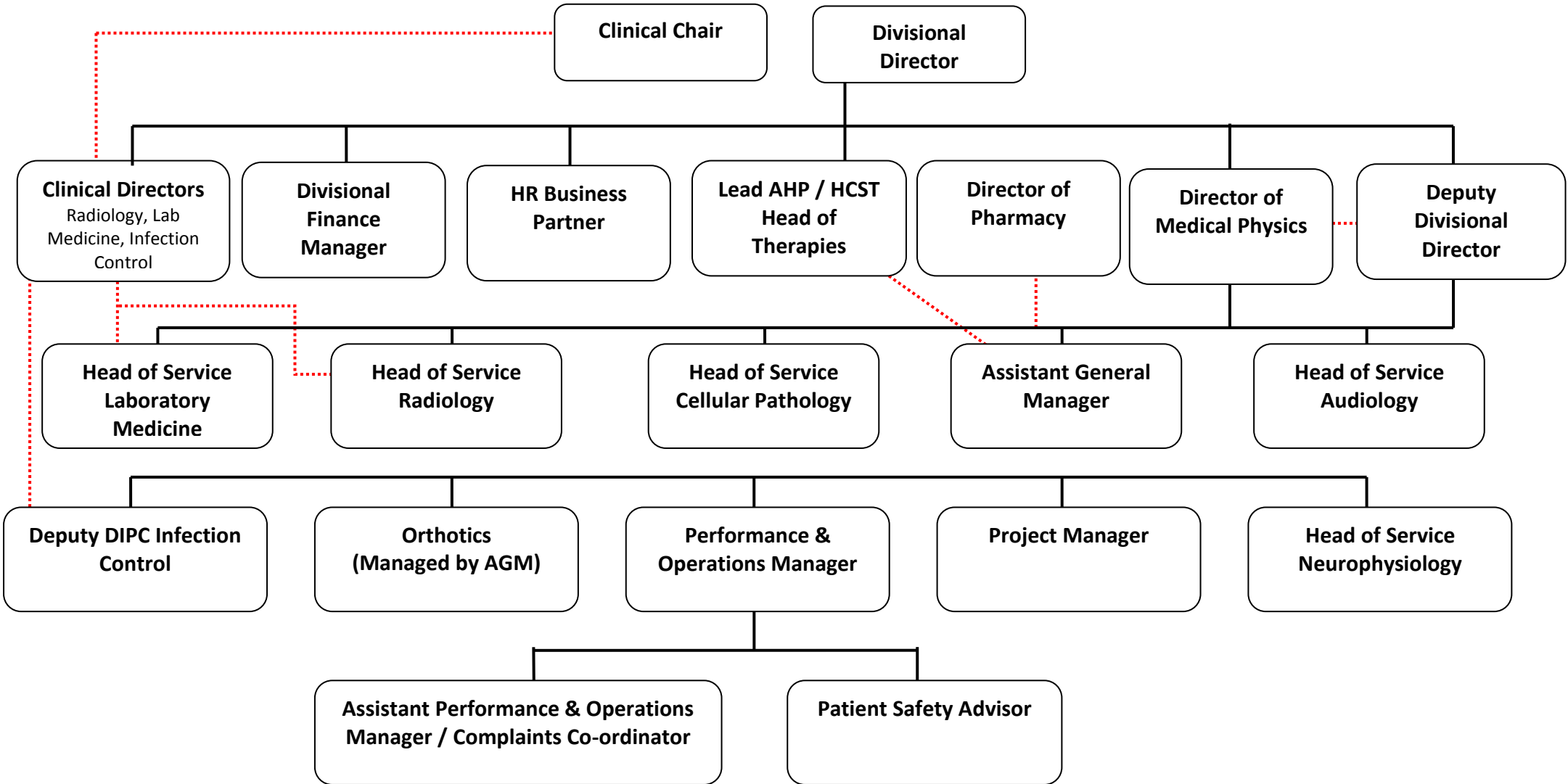
Division of Surgery, Head & Neck



Division of Specialised Services

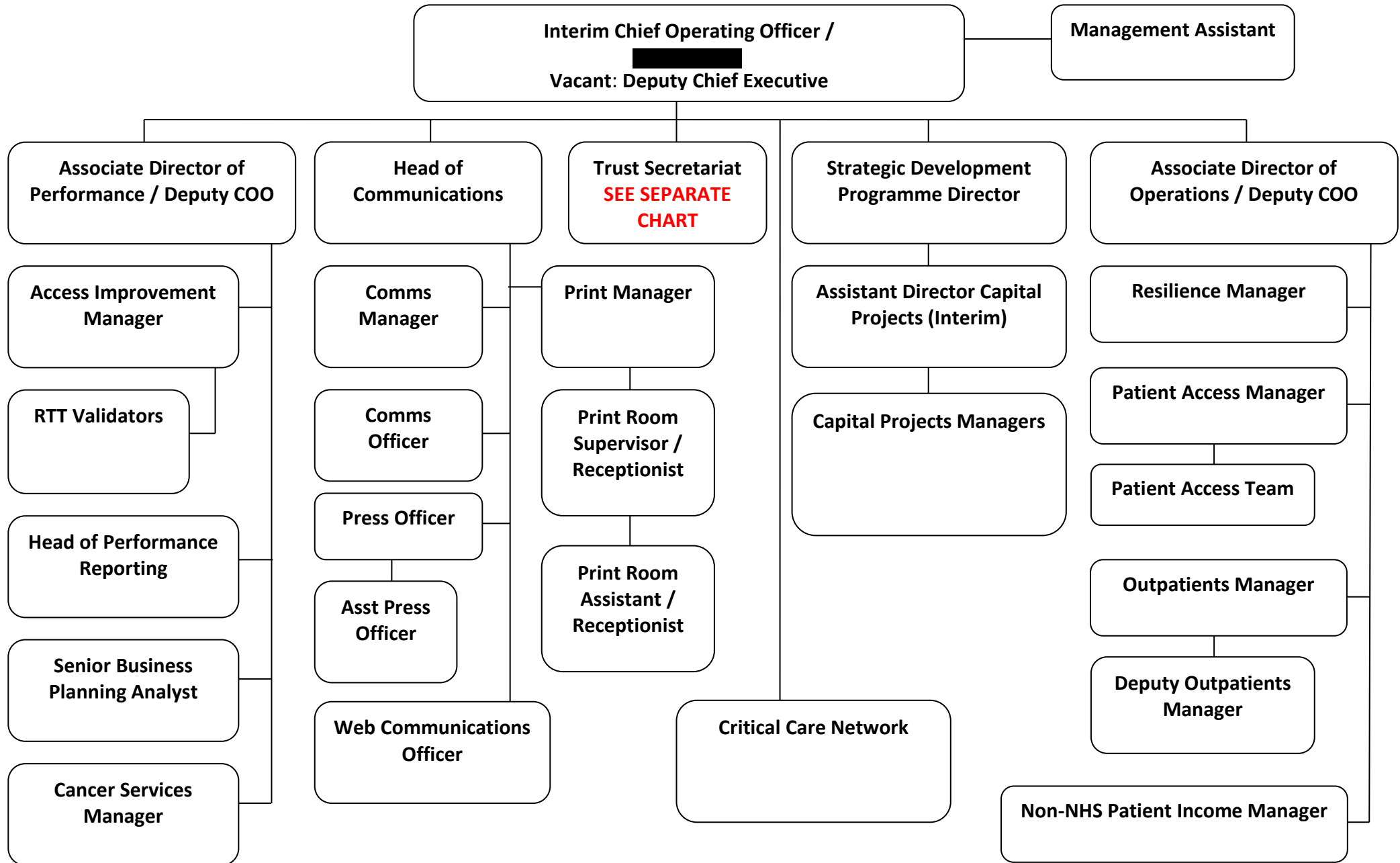


Division of Diagnostics & Therapies

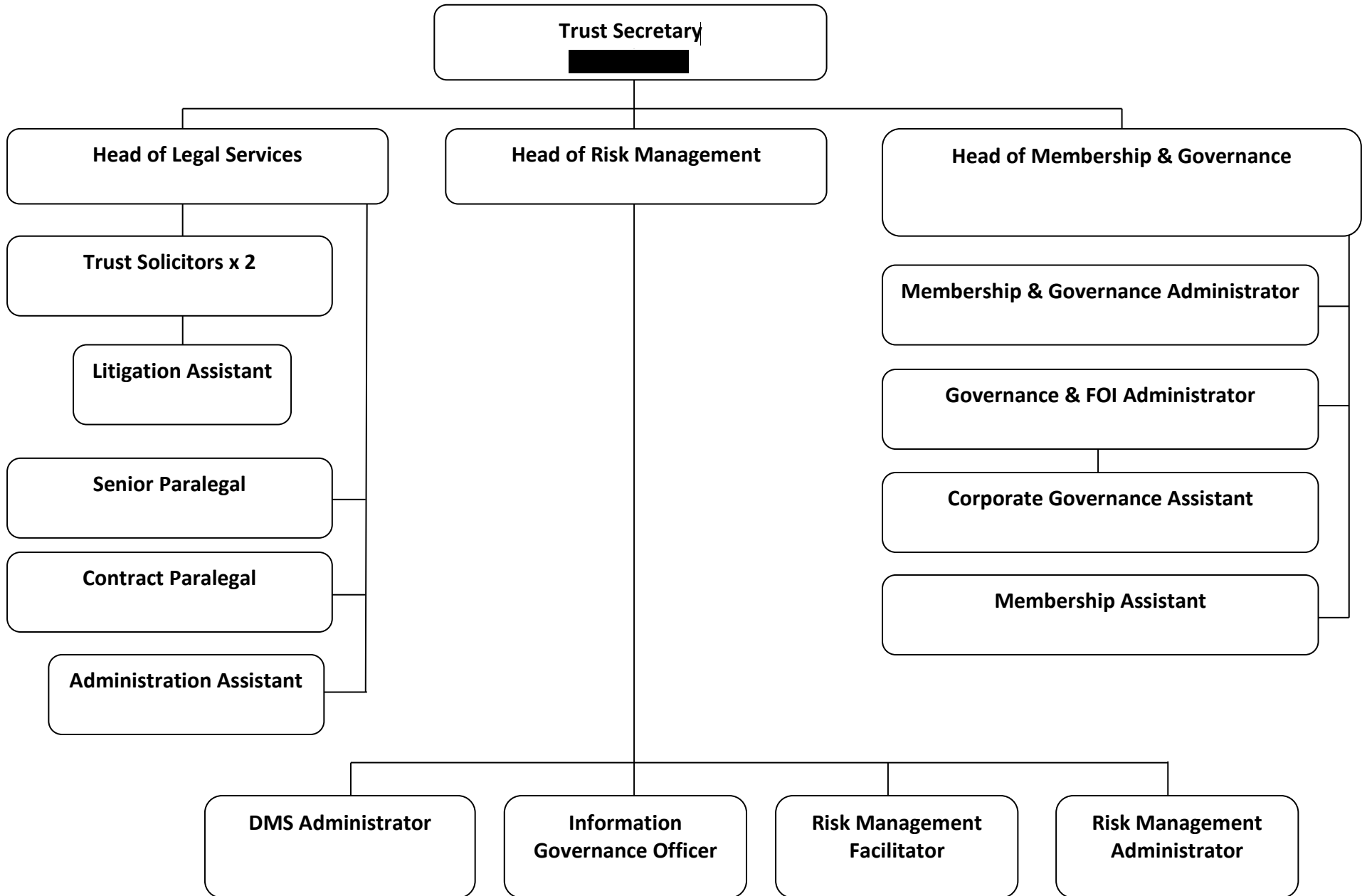


..... Operational relationship

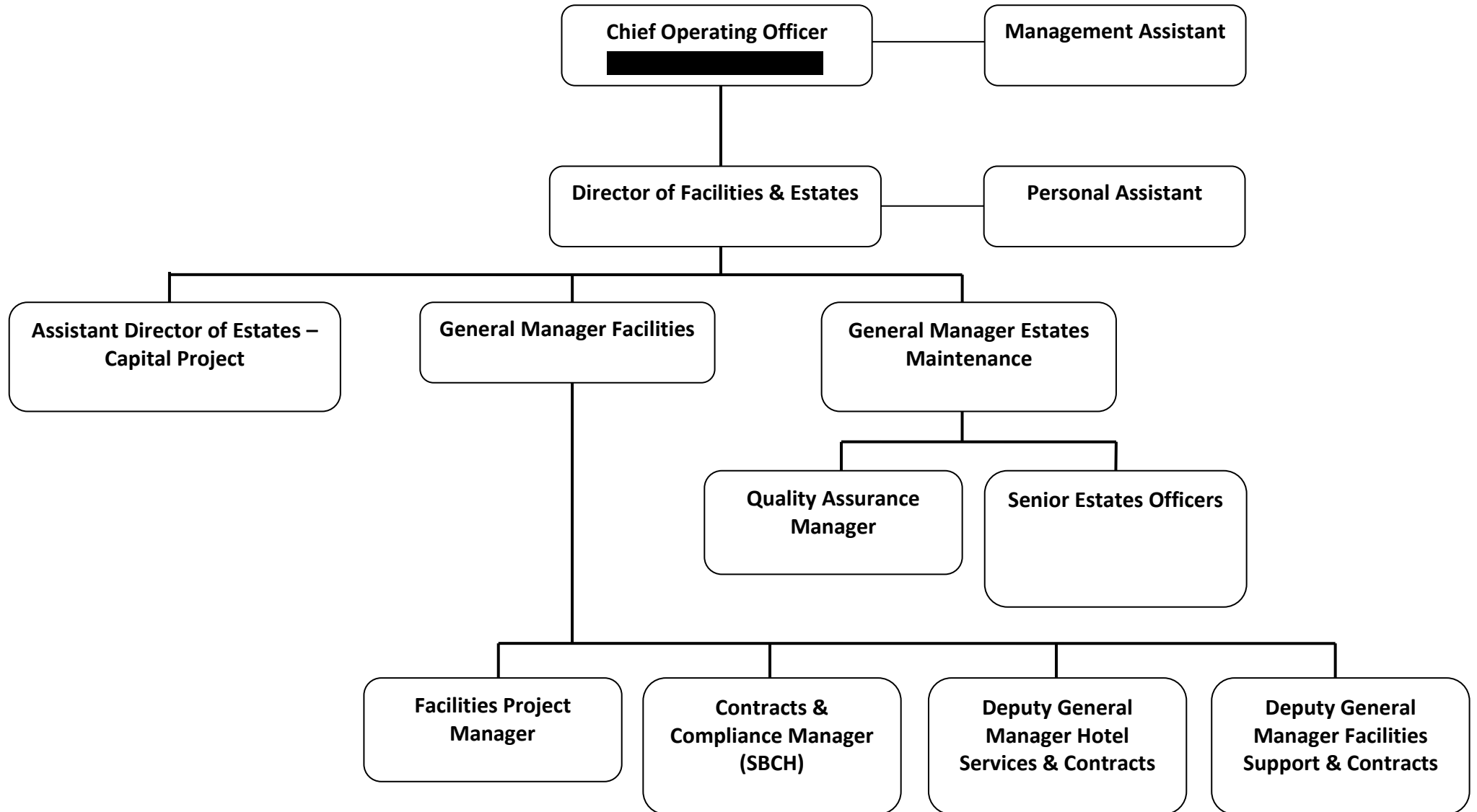
Performance, Operations, Strategic Development, Communications & Trust Secretariat



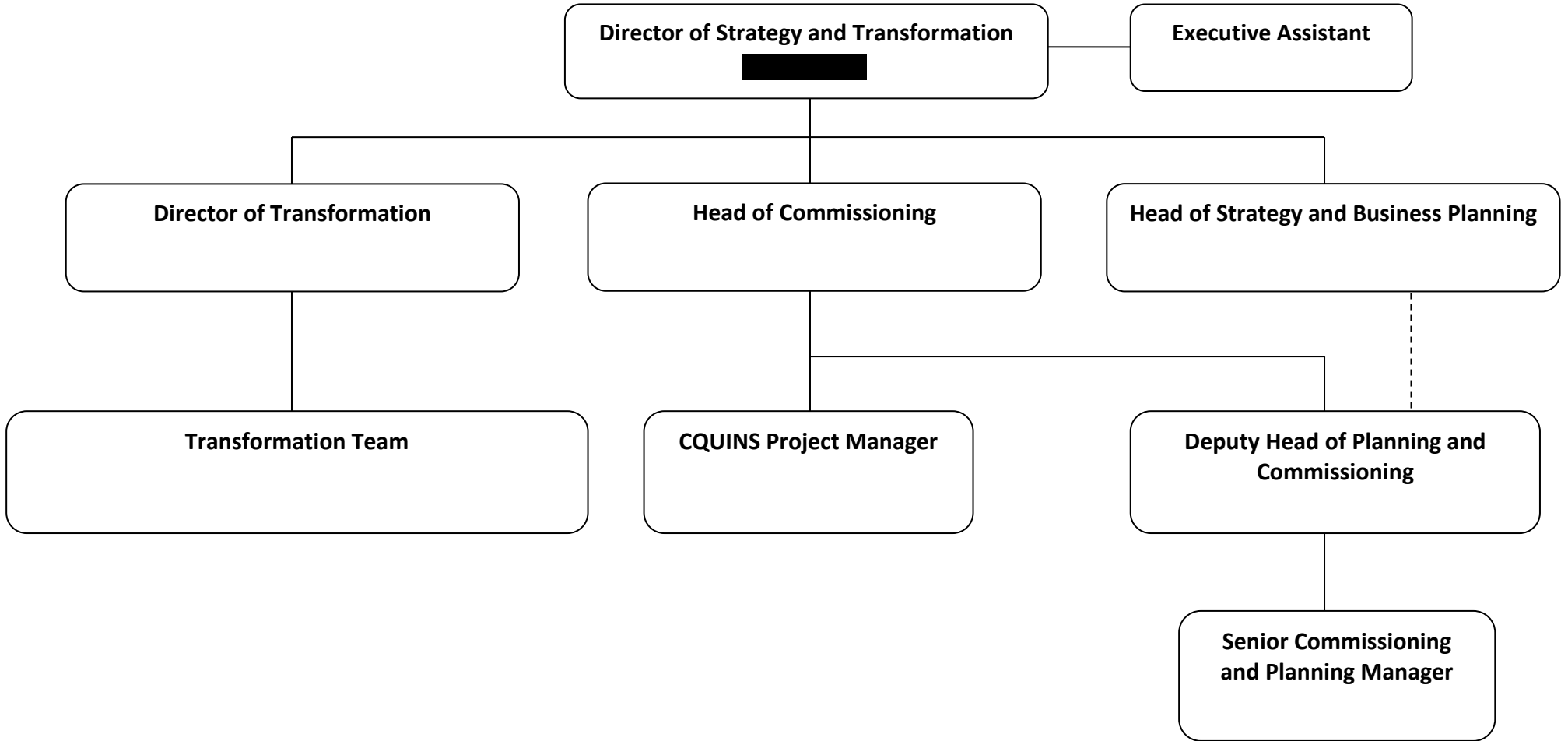
Trust Secretariat



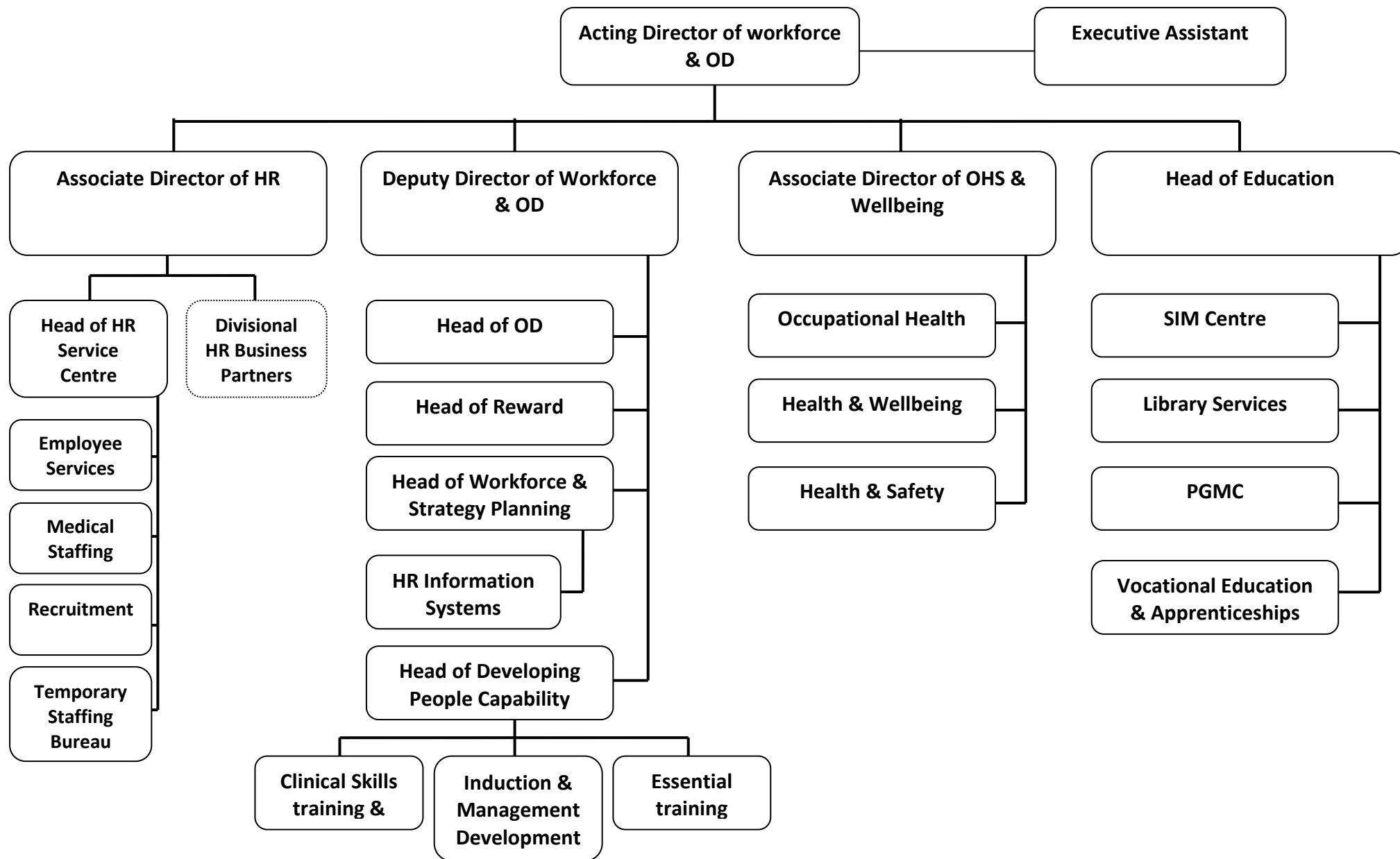
Facilities & Estates



Strategy & Transformation



Workforce & Organisational Development



Finance Department

Director of Finance & IMT
[REDACTED]

Executive Assistant

Deputy Director of Finance

Head of Financial Management & Service Improvement

Associate Director of Finance

Head of Contracting Income & Costing

Payroll

Divisional Financial Managers

Planning & Research

Service Agreements

Treasury Management & Accounts Payable

Corporate Services Divisional Financial Manager

Financial Planning & Integration

Services & Patient Costing Management

Trust-wide financial systems and controls

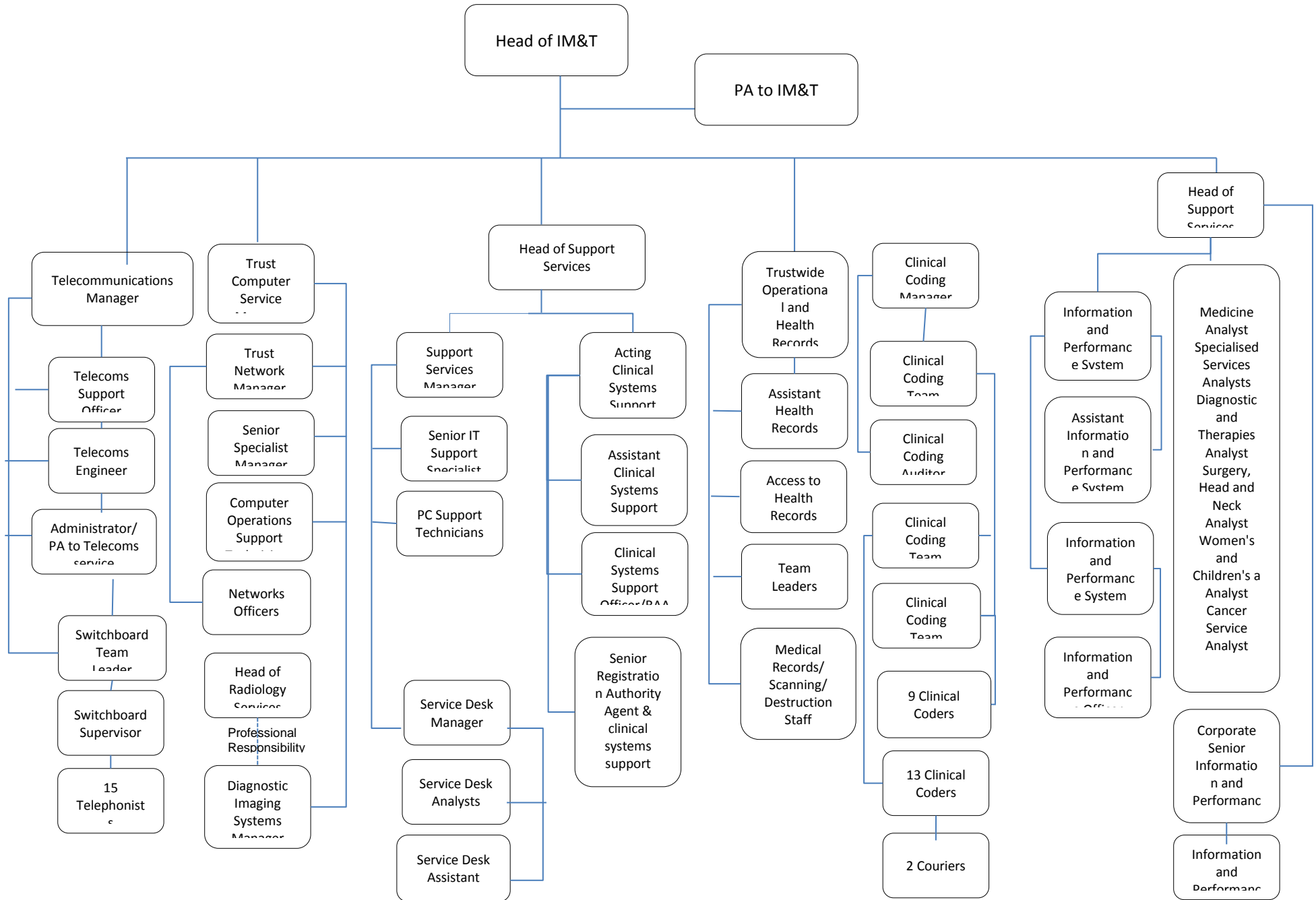
Service Improvement Accountants

Financial Accounting

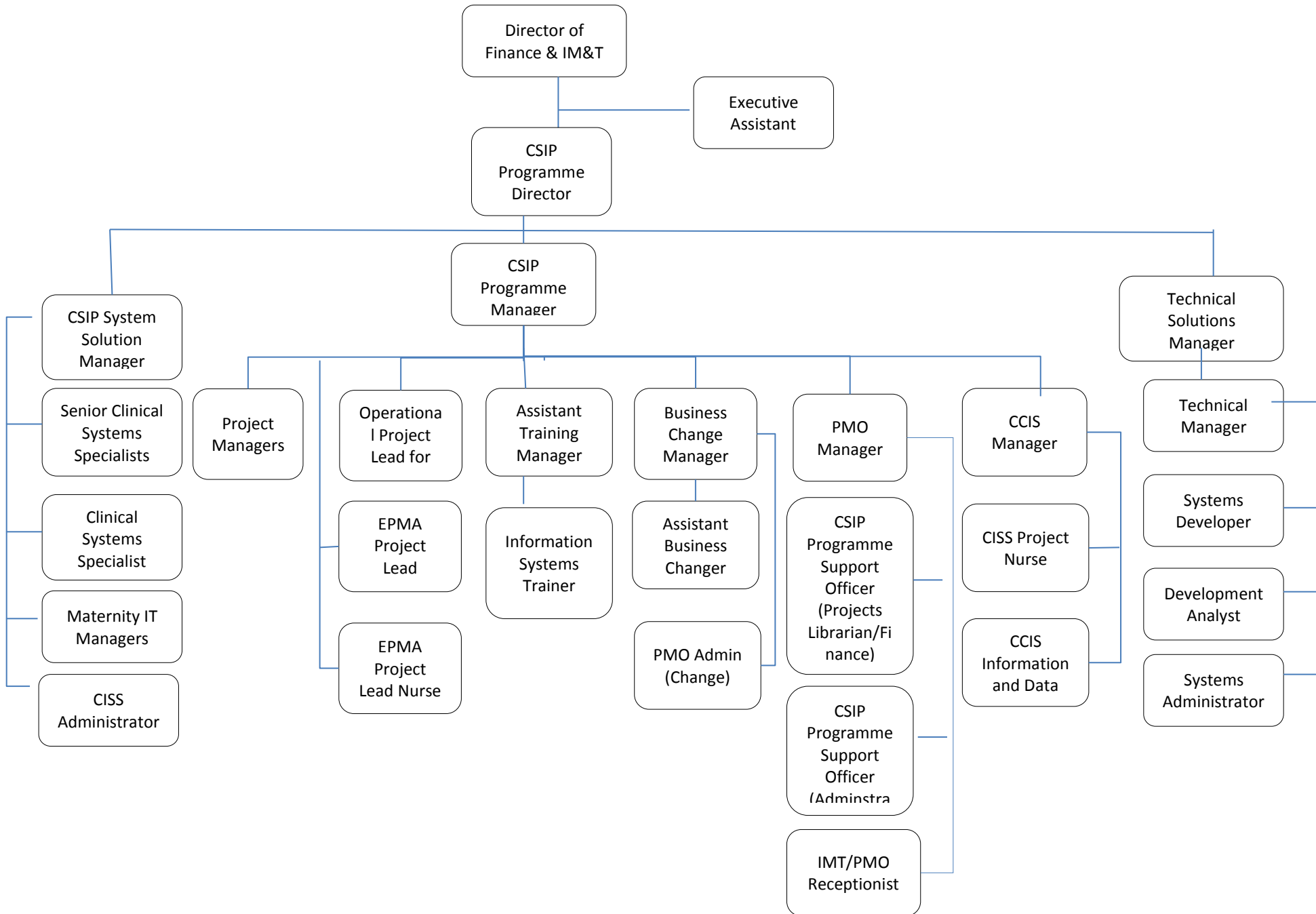
Capital Accounting

Management Accounting

IM&T



IM&T



Research & Development

Medical Director
[REDACTED]

Director of Research

**Deputy Director of
Research & Innovation**

Hosted Infrastructure – cost centres in R&I

- Cardiovascular (SpS)
- Nutrition BRU (SH&N)
 - CLAHRC (R&I)
- Research Design Service (R&I)

(brackets indicate where line management)

**Research Operations
Manager**

Research Matron

Management Assistant

**Commercial Research
Manager**

**Research Grants
Manager**

**Research Projects
Manager**

Team Leader

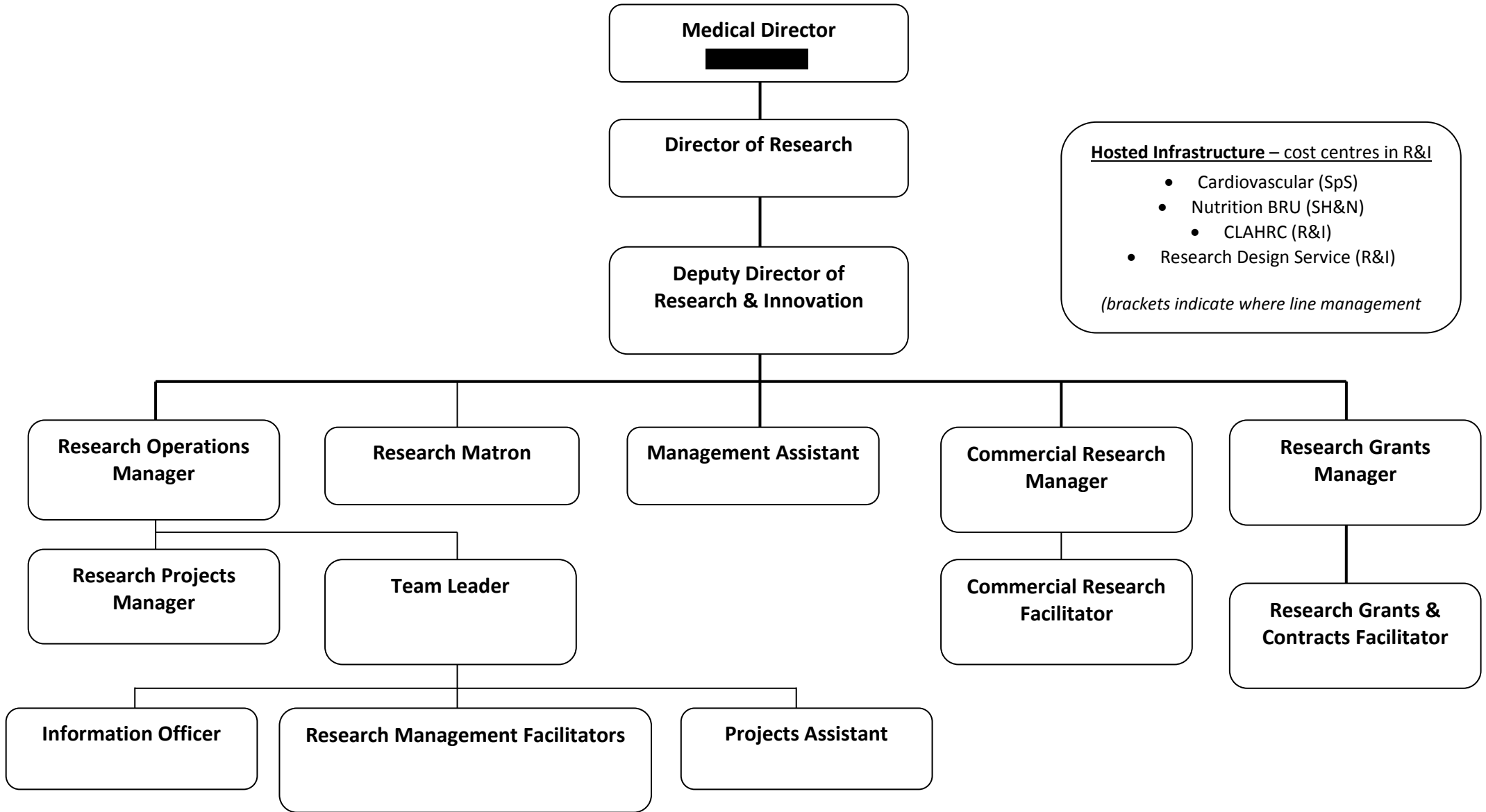
**Commercial Research
Facilitator**

**Research Grants &
Contracts Facilitator**

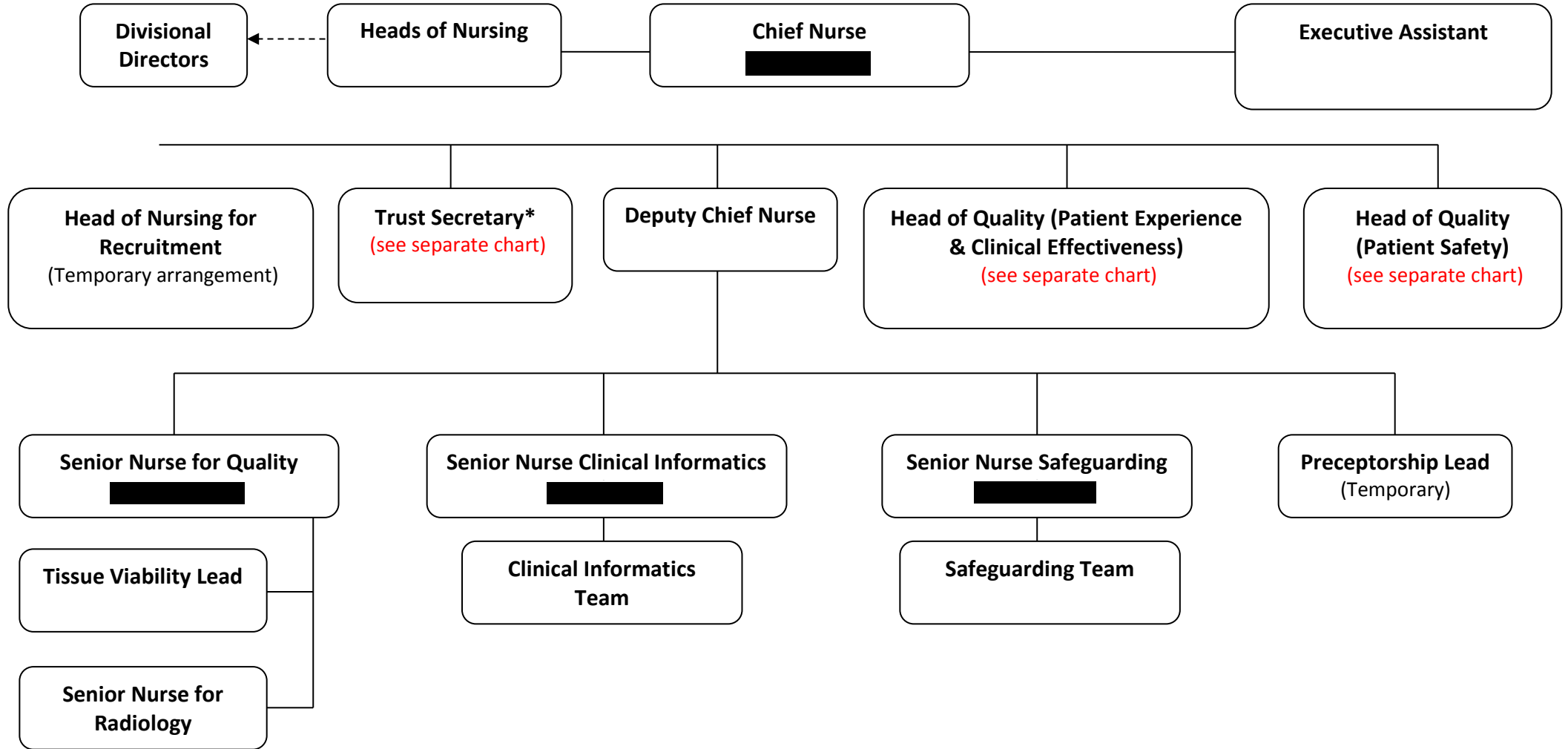
Information Officer

Research Management Facilitators

Projects Assistant

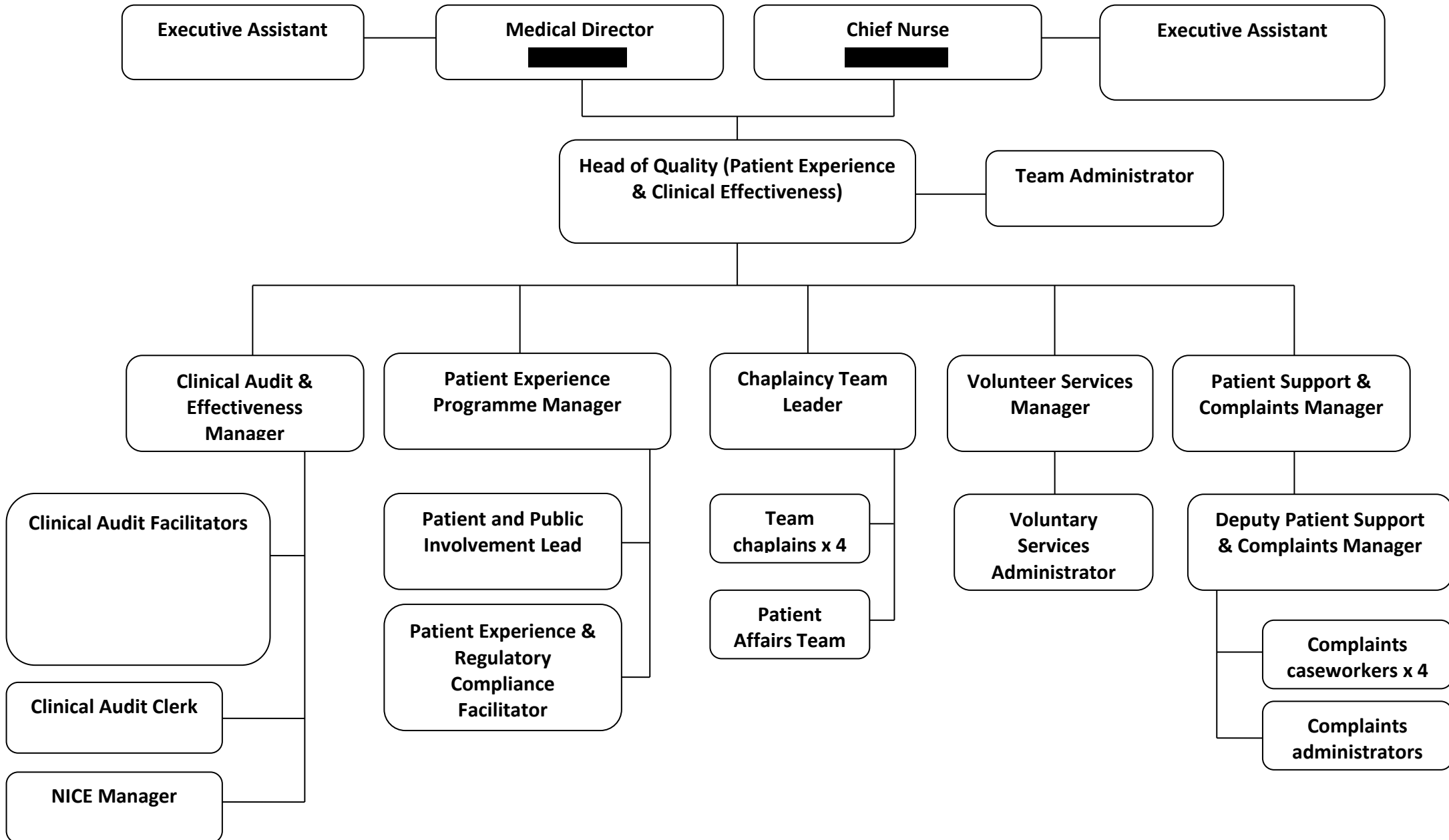


Chief Nurse



*interim arrangement until substantive Chief Operating Officer in post

Quality - Patient Experience and Clinical Effectiveness



Quality – Patient Safety

