

November 2017

Welcome to this edition of the R&I monthly e-bulletin. If you have an item to add to the next bulletin, please [email us](#) by Friday 8th December 2017.

Monitoring and oversight of research at UHBristol

As a Trust UHBristol has a responsibility for oversight of research conducted on its premises or which it sponsors. These responsibilities are driven by the UK Policy Framework for Health and Social Care Research and the Medicines for Human Use (Clinical Trials) Regulations.

Sandra Mulligan and I are both monitors for the Research and Innovation department. Our role is to monitor the research the Trust participates in to ensure it is of high quality, and is conducted in accordance with Good Clinical Practice (GCP) and any applicable regulatory requirements, whilst protecting the dignity, rights, safety and wellbeing of the subjects participating in the research.

As monitors, one of our primary aims is to support and assist you in conducting your research. We understand that the prospect of being monitored can be daunting for researchers, novice and experienced alike. We encourage you to see the monitoring process as a two way conversation providing you with the opportunity to ask questions and for us to provide advice and practical recommendations to support compliance with GCP and the applicable regulatory requirements. Our overall aim is to make the monitoring process a positive experience for all those involved.

If you have any queries regarding the conduct and monitoring of a specific study or more general questions relating to research governance, please do get in touch with us and we will be happy to advise you.

Sarah.Bishop3@UHBristol.nhs.uk Sandra.Mulligan@UHBristol.nhs.uk



This month's message from
Sandra Mulligan and Sarah Bishop,
Research Management Facilitators

Contents List

1. [News](#)
2. [UHBristol performance](#)
3. [Celebrating Successes](#)
4. [Grants & Upcoming Awards](#)
5. [Events, Training and Employment](#)

1. News

Research showcase

Thank you to everyone who joined us at our Research Showcase on Tuesday 31st October 2017, and particular thanks to our speakers who kindly shared their experiences of the challenges of working in clinical research, and tips for dealing with these. This was a fantastic event attended by delegates from a wide range of backgrounds.

If you would like to let us know about your experience of the day, please [contact us](#) – any feedback and suggestions for next year are very welcome.

To see some of the presentations from the day, visit our website – [click here](#)

Research Design Service South West e-bulletin

Bulletins and more information – [click here](#)

NIHR – CRN West of England

Latest news – [click here](#)

CLAHRC West news

Latest news – [click here](#)

Bristol Health Partners

BHP latest news – [click here](#)

West of England AHSN

News and views – [click here](#)

People in Health West of England (PHWE)

Latest newsflash – [click here](#)

Elizabeth Blackwell Institute Newsletter

Latest newsflash – [click here](#)

Patient and public involvement in research: INVOLVE

INVOLVE have issued new guidance on payments – for more information, [click here](#)

REDCap data collection for clinical research

REDCap is a secure, low-cost, online data capture system designed for clinical research. The features of REDCap help to reduce the effort and cost involved in collecting and storing clinical data. Using REDCap, study teams can build forms and reports quickly and easily, set up complex study workflows, and automate processes. Research data is entered from any location with an Internet connection. Generic or participant-specific surveys can be set up to be completed at designated time-intervals. Where an Internet connection is unavailable, data can be captured through the REDCap mobile app and uploaded at a later date.

For further information, contact: brms-redcap@bristol.ac.uk
mai.baquedano@bristol.ac.uk alison.horne@bristol.ac.uk

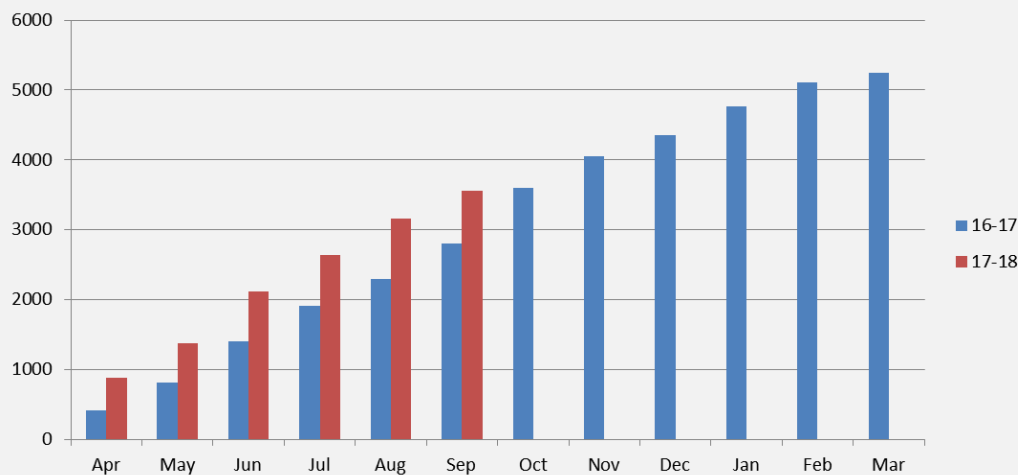


2. UHBristol Performance



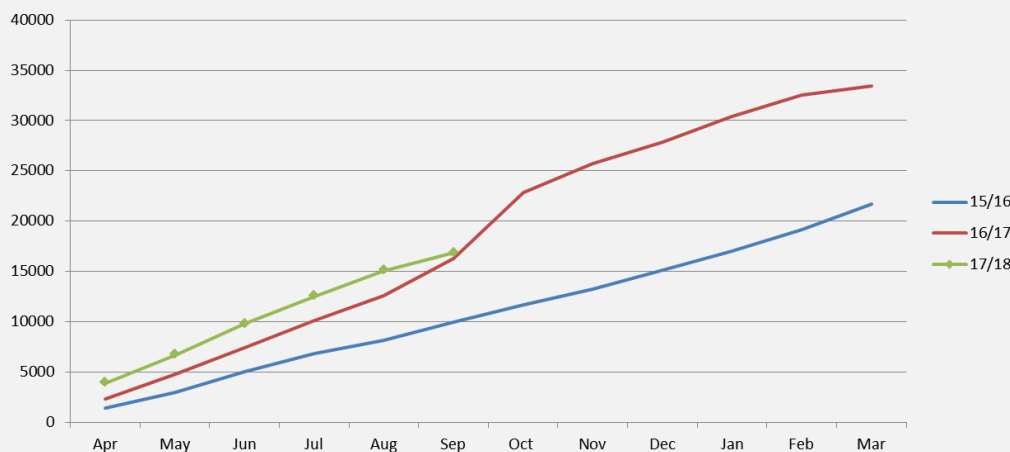
University Hospitals Bristol
NHS Foundation Trust

Cumulative Recruitment in Commercial and Non-Commercial NIHR studies



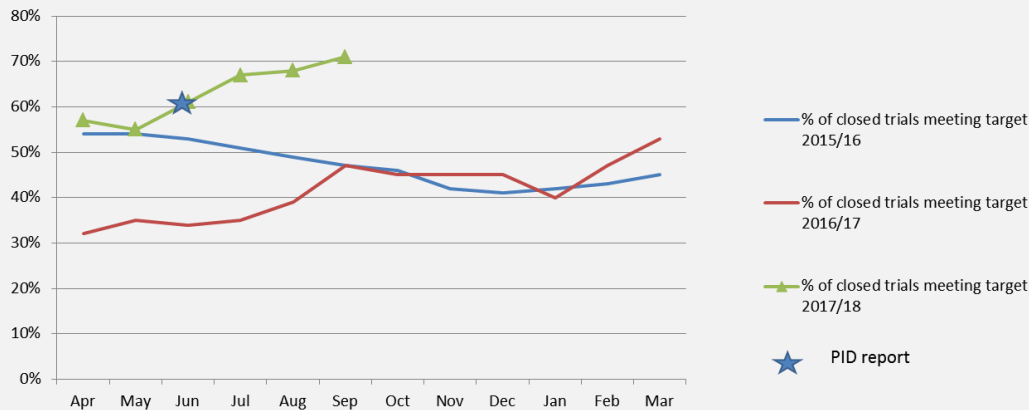
The above is taken from the NIHR portfolio report which is issued with a 4 week lag of data.

Cumulative Weighted Recruitment to date 2017/18 compared to 2016/17 and 2015/16



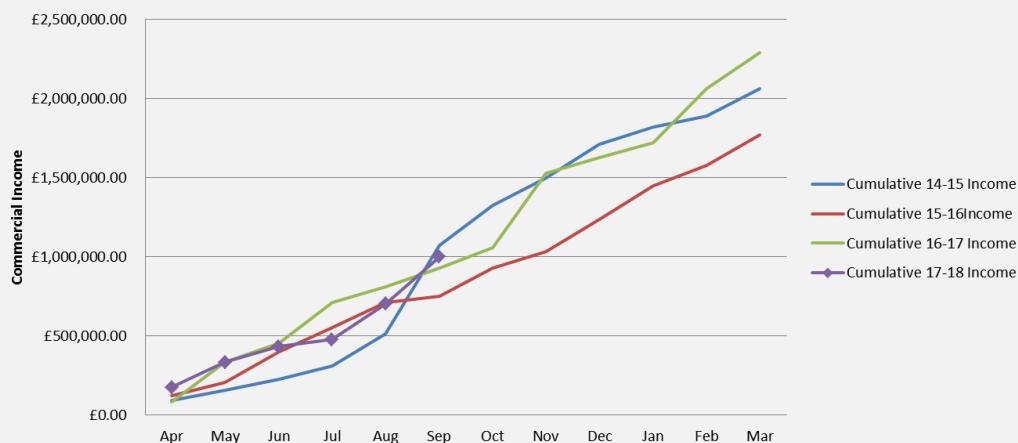
This data is extracted from the NIHR portfolio report which issued with a 4 week lag of data.

Percentage of commercial clinical trials closed to recruitment during the reporting period meeting time to target



This data is taken from EDGE on a rolling 12 months basis. Latest figures therefore show number of clinical trials closed to recruitment in reporting period between 01/10/2016 and 30/09/2017 meeting time to target (i.e. the preceding 12 months). The adjusted line excludes trials where recruitment to target cannot be influenced locally (e.g. very rare patient group where we may not see any patients at all or follow-on/extension trials) and where the defined recruitment window was closed earlier than the date provided in the contract.

Monthly Commercial Research Income – Cumulative Commercial Income



Actual income data derived from monthly reports provided by finance on value of invoices raised.

3. Celebrating successes

Good news from BHOC – Add-Aspirin study

The Bristol Haematology & Oncology team are currently the 3rd highest recruiter to the Add-Aspirin study, out of nearly 150 UK centres. BHOC have managed to recruit 95 participants to the study so far.

Congratulations to the team and all involved.



Project to prevent cerebral palsy in premature babies wins funding

Developed in maternity units across the West of England, the 'PreCePT' project has been selected by the Health Foundation to be part of an ambitious £3.5 million improvement programme.

Read more on the [UHBristol news page](#)



4. Grants & Upcoming Awards

Funding and support round-up

November 2017 - Latest funding opportunities – [click here](#)



Funding Finder

The West of England Academic Health Science Network – [Funding Finder](#)



BMA Foundation for Medical Research – 2018 grant details announced

The BMA Foundation for Medical Research provides approximately £600,000 of research funding annually, this year across 11 different grants. Details of the 2018 grants have now been confirmed and all grant categories can be viewed on the [BMA Foundation website](#). Applications are invited from medical practitioners and/or research scientists for research in progress or prospective research.

Applications for the 2018 grant round will open on the BMA Foundation website from 1st



January 2018. The deadline for applications is **2nd March 2018.**

For any further information on the BMA Foundation for Medical Research visit bmafoundationmr.org.uk or contact researchgrants@bma.org.uk or 020 7383 6341.

5. Events, Training and Employment

Clinical Primer Scheme

Are you considering a career as a clinical academic but want to experience life as a researcher before you decide?

Applications from suitably qualified medical, veterinary & dental graduates are invited for six month biomedical/health research "primer" projects to be undertaken at the Universities of Bristol, Cardiff & Exeter *. These are supported by a Wellcome Trust 'Institutional Strategic Support Fund'. The projects will commence in 2018 and the funding will cover clinical salary and associated project costs.

This opportunity is aimed at exceptionally motivated clinically qualified medical, veterinary and dental trainees who are at an early stage of their career, but who can demonstrate a capability and a drive to undertake a period of research with a view to developing a career in academic medicine. Successful candidates will undertake a biomedical "primer" project at either the University of Bristol, Cardiff or Exeter with a view to preparing them for a PhD fellowship application.

All applicants should be entitled to work within the European Economic Area (EEA). Primers will be available in various areas and specialties.

We particularly encourage applications from candidates keen to conduct interdisciplinary projects and they will be co-supervised by clinical and non-clinical members of staff. The training period is negotiable (range 3-6 months) and will allow time for one clinical session per week, if applicable.

Further information, eligibility criteria and an application form are available from the participating institutions:

[University of Bristol, Elizabeth Blackwell Institute](#)

[Cardiff University](#)

[University of Exeter](#)

The closing date for applications is **09:00 GMT, Monday, 8 January 2018.**

If you have any queries, please see the relevant institutions website for contact details.

Introduction to Research Governance short course

1 - 2 February 2018

This two day course is essential for all individuals who may be undertaking health research with participants.

What do we mean by research governance?

Who is responsible for research governance?

What are the main areas that you will need to consider before, during and after undertaking research?

Where can you get help and advice?

2 days (approximately 12 hours teaching including lectures and practicals).

Registration will start at 8.30am on the first day, the course will finish by 3.15pm on the final day. Further information and online bookings can be found [here](#).



[Go to top](#)