

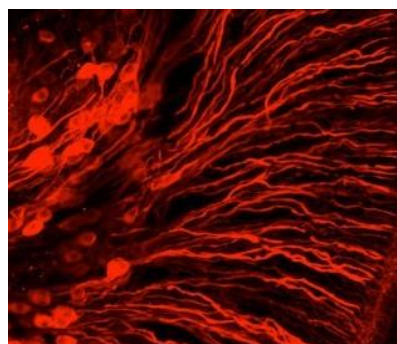
University Hospitals Bristol 
NHS Foundation Trust

UHBristol Research Showcase

Tuesday 31st October 2017

Lecture Theatre 1
UH Bristol Education and Research Centre
09:45 – 15:30

Respecting everyone
Embracing change
Recognising success
Working together
Our hospitals.



RESEARCH AND INNOVATION DAY

Tuesday 31st October 2017

Venue: University Hospitals Bristol Education and Research Centre

Lecture Theatre 1

Upper Maudlin Street Bristol BS2 8AE

P R O G R A M M E

09:15 - 09.45	Registration and Coffee (Lecture theatre 1, Level 2, Education and Research Centre)
	Session 1 Welcome and overview of research at UHBristol Chair: Jonathan Sandy
09:45 – 10:00	<ul style="list-style-type: none"> • Welcome & opening remarks - <i>John Iredale</i> • Research at UHBristol - <i>David Wynick or Diana Benton</i>
	Session 2: Challenges of clinical research Chair: Jonathan Sandy
10:00 - 11:15	<ul style="list-style-type: none"> • Immune thrombocytopenia - <i>Charlotte Bradbury</i> • Research in the Intensive Care Unit – <i>Aggie Skorko, Matt Thomas, Jeremy Bewley</i> • Trials and Tribulations – Investigator led studies at Bristol Haematology and Oncology Centre – <i>Amit Bahl & Alicia Bravo</i> • Why should I help you when you're not helping me? The challenges of recruiting for self-harm research – <i>Fiona Fox and Salena Williams CLAHRC West</i>) • Making the most of your research cohort – <i>Lucy Culliford</i>
11:15 – 11:45	Coffee served on the Terrace, Level 4, Education and Research Centre
	Session 2 Above and Beyond & Research Capability Funding grant holders Chair: Fiona Cramp
11:45 - 13:00	<ul style="list-style-type: none"> • Dietary intervention to improve glycaemic control in young people with cystic fibrosis and altered glucose handling - <i>Laura Birch</i> • Imaging heart performance during exercise in paediatric elite athletes and children with congenital heart disease – a novel diagnostic methodology- <i>Guido Pieles</i> • Recognising and responding to cognitive impairment in emergency care - <i>Sarah Voss</i> • A patient reported outcome measure for Giant Cell Arteritis - <i>Jo Robson</i> • The DUSK study – challenges of a complex intervention in a complex research population <i>Nikki Jeal</i>

13:00 – 13:45	<p>Lunch served on the Terrace, Level 4, Education and Research Centre</p> <p>“Redcap” demonstration and information, Level 4.</p>
	<p>Session 3 NIHR Bristol Biomedical Research Centre</p> <p>Chair: David Wynick</p>
13:45 – 15:30	<ul style="list-style-type: none"> • Overview of BRC – Hazel Phillips <p>Theme talks:</p> <ul style="list-style-type: none"> • Cardiovascular – <i>Ben Gibbison</i>- Characterising ultradian rhythms of cortisol after cardiac surgery and in critical care • Mental Health – <i>David Gunnell & Stan Zammit</i> • Nutrition – <i>Georgina Williams</i>: FADES Feeding and Autoimmunity in Down's Syndrome Evaluation Study • Perinatal and Reproductive Health – <i>Debbie Lawlor</i> • Surgical Innovation - <i>Rob Hinchliffe, Natalie Blencowe, Barry Main</i> - Engaging trainees and students with surgical research • Developing a collaborative approach to patient and public involvement – <i>Andy Gibson</i>
15:30	<p>Closing Remarks – David Wynick</p>

Follow us on Twitter



@UHBristolNHS

Visit our website for:

- Latest funding calls from the NIHR, UHBristol and Above & Beyond
- The R&I monthly newsletter
- Links to partner organisations
- Contact details for the Research & Innovation department

www.uhbristol.nhs.uk/research-innovation