

## February 2017

Welcome to this edition of the R&I monthly e-bulletin. If you have an item to add to the next bulletin, please [email us](#) by Mon 27<sup>th</sup> February 2017.

### **The Spring 2017 joint call for University Hospitals Bristol Research Capability Funding and Above and Beyond grants is now open.**

#### **UHBristol Research Capability Funding (RCF)**

Research Capability Funding (RCF) is awarded annually to UHBristol by the NIHR based on our NIHR grant income. RCF is used to help NHS organisations attract, develop and retain high quality research active staff. The call is now open for UHBristol RCF funded grants, of up to £20,000, that can be used to:

- a) Fund Research Sessions/PAs (for medical and non-medical staff) to allow time to prepare NIHR research grant applications; and/or
- b) Fund the generation of preliminary or underpinning data to support an NIHR application; a “pump-priming” grant.

#### **Above and Beyond**

Above and Beyond generously allocate funds to research in UHBristol, and the call is now open for Above and Beyond research grants (up to £20,000). These grants aim to promote high quality biomedical research in UHBristol. Applications are welcomed from any medical or non-medical UHBristol employee, or university academic (Universities of Bristol and the West of England) holding an honorary contract with UHBristol.

PLEASE NOTE: FOR THE 2017 GRANT CALLS, THE EMPHASIS WILL BE ON PUMP-PRIMING NIHR GRANTS

Application forms and full guidance notes for both RCF and Above and Beyond grants are available on our [website](#).

Deadline: 09:00, **Thursday, 13 April 2017**

Please read the guidance and then contact Caroline Nash or Elinor Griffiths: 0117 342 0228/0585 Email: [funding@uhbristol.nhs.uk](mailto:funding@uhbristol.nhs.uk)



*This month's message from*  
**Elinor Griffiths**  
**Research Facilitation &**  
**Grants Manager**

## Contents List

1. [News](#)
2. [UHBristol performance](#)
3. [Celebrating Successes](#)
4. [Grants & Upcoming Awards](#)
5. [Events](#)
6. [Training & Employment Opportunities](#)

# 1. News

## A million decisions – information from the Library

Every day more than a million decisions are made across the NHS and healthcare sector. Under the Health and Social Care Act 2012 there is a responsibility for health services to ensure use of evidence obtained from research, with the aim of improving quality of care, patient experience and cost effectiveness.

### How we support your decision making

Specialist librarians unite clinicians with the evidence to inform good healthcare decision-making. We provide:

- Access to essential resources, such as **UpToDate®** used 22,000 times a year by clinicians at the point of care.
- Fast and free access to thousands of articles.
- Training in finding evidence, critical appraisal, and medical statistics. In 2016 we trained over one thousand staff and students

Find out more: #amilliondecisions [cilip.org.uk/amilliondecisions](http://cilip.org.uk/amilliondecisions)



## NIHR Dissemination Centre - Right Evidence, Better Decisions

The National Institute of Health Research (NIHR) [Dissemination Centre](#) aims to put good research evidence at the heart of decision making in health and social care.

The centre critically appraises the latest health research to identify the most reliable, relevant and significant findings. It then disseminates these findings as:

[NIHR Signals](#) - The latest important research, summarised

[NIHR Highlights](#) - Conditions, treatments and issues explored using NIHR evidence

[Themed Reviews](#) - Bringing together NIHR research on a particular theme

To keep up to date, [sign up to their mailing list](#) or follow [@NIHR\\_DC](#) on twitter.



## Research Design Service South West e-bulletin

Latest e-bulletin – [click here](#)

Previous bulletins and more information – [click here](#)



## Bristol Health Partners

BHP news – [click here](#)



## CLAHRC West newsletter

Latest news – [click here](#)



## NIHR Bristol Nutrition BRU

Latest news – [click here](#)



## West of England AHSN

News and views – [click here](#)



## People & Research West of England (PHWE)

Latest newsflash – [click here](#)



Better involvement · Better research · Better health

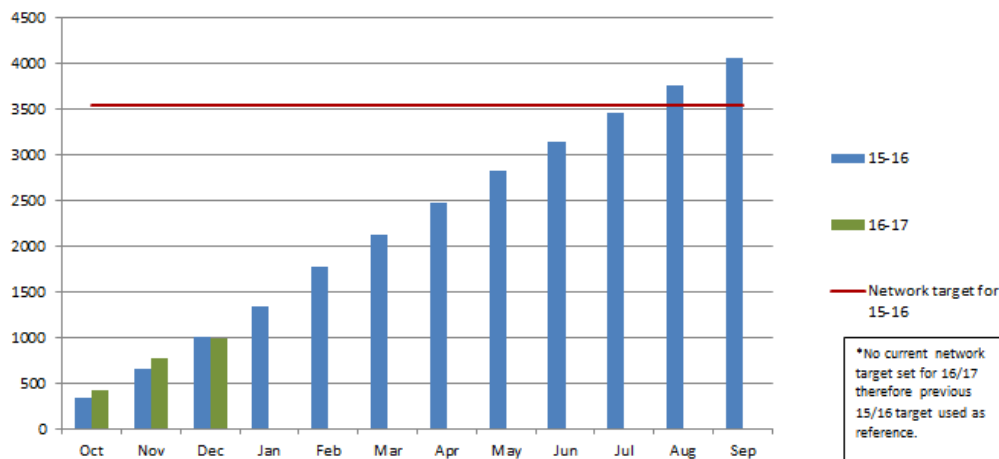
## Research will look at scale of emergency calls related to dementia

A NIHR-funded research project led by the University of the West of England (UWE Bristol) in partnership with University Hospitals Bristol NHS Foundation Trust will look at calls to emergency services from older people with multiple health problems which include dementia. For more information [click here](#)



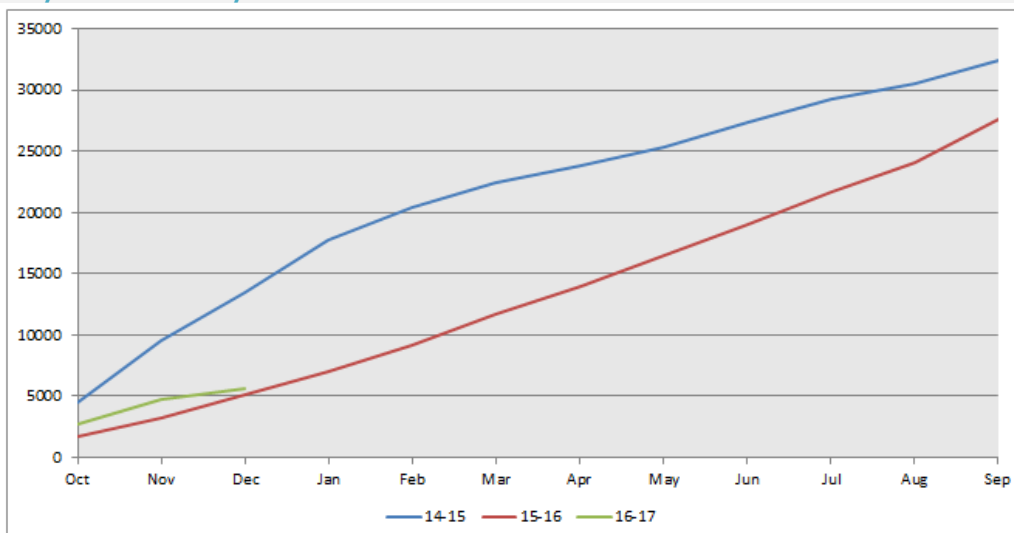
## 2. UHBristol Performance

### Cumulative Recruitment in Commercial and Non Commercial NIHR studies



The above is taken from the CPMS which is issued with a 4 week lag of data.

### Cumulative Weighted Recruitment to date 16/17 compared to 15/16 and 14/15

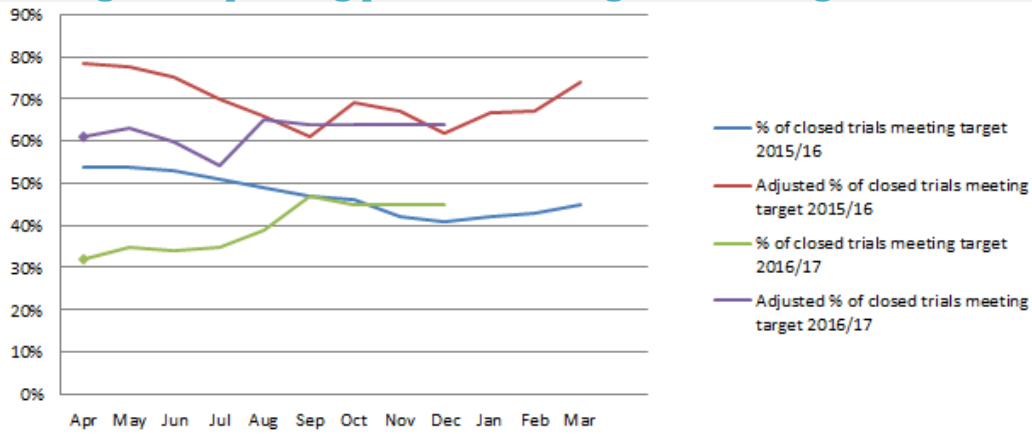


This data is extracted from the NIHR portfolio report which issued with a 4 week lag of



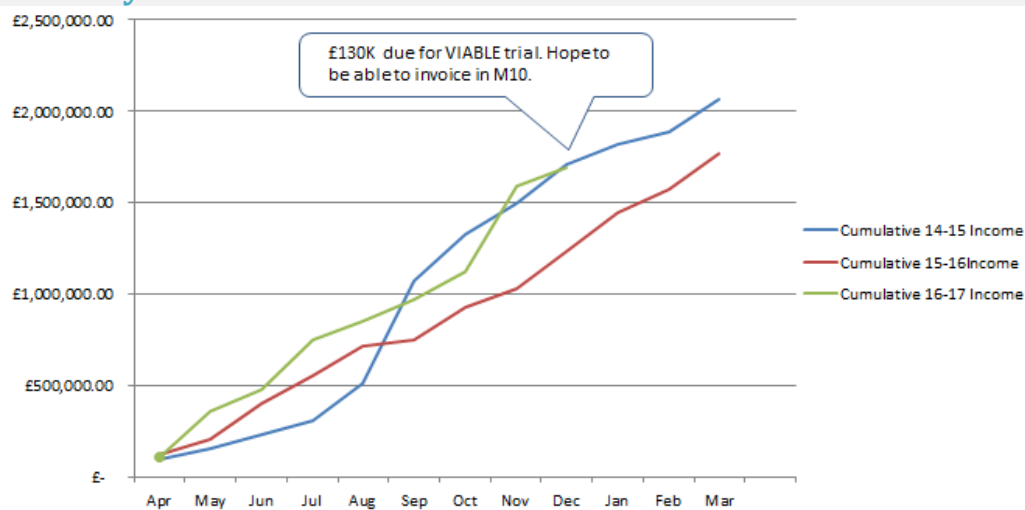
data.

## Percentage of commercial clinical trials closed to recruitment during the reporting period meeting time to target



This data is taken from EDGE on a rolling 12 months basis. Latest figures therefore show number of clinical trials closed to recruitment in reporting period between 01/01/2016 and 31/12/2016 meeting time to target (i.e. the preceding 12 months). The adjusted line excludes trials where recruitment to target is cannot be influenced locally (e.g. very rare patient group where we may not see any patients at all or follow-on/extension trials) and where the defined recruitment window was closed earlier than the date provided in the contract.

## Monthly Commercial Research Income



Actual income data derived from monthly reports provided by finance on value of invoices raised.

## 3. Celebrating Successes

### POPPI study recruitment

University Hospitals Bristol are the highest recruiting site nationally out of 24 sites.

Katie Sweet said, "we hope the results will show to be of psychological benefit to our ICU patients, the team has worked really hard 7 days a week recruiting, it's great as a first time PI to end as top recruiter, very proud of my team."

For more information contact Katie Sweet & ITU Research Team

## Genetic Study of Age Related Hearing Impairment

Congratulations to The Surgical Research Team for recruiting 31 patients to the Genetic Study of Age Related Hearing Impairment. Due to the commitment of Research Nurses Louise Flintoff, Jo Chambers and Rebecca Houlihan, the team recruited over target and ahead of the recruitment deadline.

## The Bristol cardiac surgery trials team has hit its recruitment target of 15 patients to the 'VEST III study.

Through close liaison with the company, Vascular Graft Solutions in Israel, we have recruited 15 patients to receive their novel new device, which will hopefully increase the longevity of the vessels replaced during Coronary Artery Bypass Grafting (CABG).

The research nurses Emma Hopkins, Katrina Spielmann and Mel Ridout have coordinated training visits from Israel for the Bristol surgeons, including the PI, Cha Rajakaruna and colleagues, Hunaid Vohra and Umberto Benedetto. This has been no mean feat, with so many theatre list changes and patients recruited at short notice.

The sponsor –VGS- have acknowledged our hard work with the following statement; *“Great work Bristol team! We really appreciate your hard work, serious attitude, and unprecedented attention to detail! It is a pleasure to work with you!”* (Orit YarmanVGS)



## 4. Grants & Upcoming Awards

### Workshop: Above and Beyond (A&B) and Research Capability Funding (RCF) grants

The next call for submission of A&B/RCF grant applications will be in April 2017. We are running workshops aimed at anyone who is planning to apply for one of these grants (up to £20,00) or those who would like to know more about the scheme.

These sessions are open to any medical or non-medical UH Bristol employee or university academic holding an honorary contract with UH Bristol. University academics considering an application are strongly encouraged to do so in collaboration with UHBristol clinicians.

Workshop content includes:

- how to complete the application form
- how to set up and manage an A&B or RCF grant
- who to contact for support at each stage of the process
- how to identify eligible costs

Venue: **Research & Innovation, Education & Research Centre, UHBristol**

Workshop dates:

- **Wednesday, 15 February 2017** 08:00-09:00 BRU Nutrition Seminar Room [Book a place](#)
- **Tuesday, 21 February 2017** 08:00-09:00 Tutorial Room 6 [Book a place](#)
- **Wednesday, 22 February 2017** 13:00-14:00 BRU Nutrition Seminar Room [Book a place](#)

Places are limited so please book in advance using the links above or by emailing

[funding@uhbristol.ac.uk](mailto:funding@uhbristol.ac.uk)

For further information about these grants, please contact [funding@uhbristol.ac.uk](mailto:funding@uhbristol.ac.uk) or [visit the website](#)

## The Spring 2017 joint call for University Hospitals Bristol Research Capability Funding and Above and Beyond grants is now open

### UHBristol Research Capability Funding (RCF)

Research Capability Funding (RCF) is awarded annually to UHBristol by the NIHR based on our NIHR grant income. RCF is used to help NHS organisations attract, develop and retain high quality research active staff. The call is now open for UHBristol RCF funded grants, of up to £20,000, that can be used to:

- a) Fund Research Sessions/PAs (for medical and non-medical staff) to allow time to prepare NIHR research grant applications; and/or
- b) Fund the generation of preliminary or underpinning data to support an NIHR application; a “pump-priming” grant.

### Above and Beyond

Above and Beyond generously allocate funds to research in UHBristol, and the call is now open for Above and Beyond research grants (up to £20,000). These grants aim to promote high quality biomedical research in UHBristol. Applications are welcomed from any medical or non-medical UHBristol employee, or university academic (Universities of Bristol and the West of England) holding an honorary contract with UHBristol.

PLEASE NOTE: FOR THE 2017 GRANT CALLS, THE EMPHASIS WILL BE ON PUMP-PRIMING NIHR GRANTS

Application forms and full guidance notes for both RCF and Above and Beyond grants are available on our [website](#).

Deadline: **09:00, Thursday, 13 April 2017**

Please read the guidance and then contact Caroline Nash or Elinor Griffiths: 0117 342 0228/0585 Email: [funding@uhbristol.nhs.uk](mailto:funding@uhbristol.nhs.uk)

## Residential grant writing retreat

Monday **4 September** to Friday **8 September 2017**  
Dillington House – near Ilminster, Somerset

The Research Design Services South West (RDS SW) and South Central (RDS SC) are delighted to offer a unique opportunity to researchers in health and social care across their regions. The Residential Grant Writing Retreat provides an opportunity for research teams to make rapid progress over a relatively short period of time toward high quality research proposals suitable for submission to national peer-reviewed funding streams. Participating teams will enjoy protected time dedicated to the development of their research proposals away from the distractions of their workplace, expert help and support from RDS adviser staff and the experience of working as part of a professional research team.

The Retreat is open to health, public health and social care practitioners and academic partners working within the areas covered by RDS SW and RDS SC.

Researchers who have attended this retreat have gone on to have notable success. Further information can be found here: <http://www.rds-sw.nihr.ac.uk/rgwr.htm>

Research Design Service  
South West

  
National Institute for  
Health Research

The West of England Academic Health Science Network Innovation Funding Bulletin  
For funding opportunities [click here](#)

## NIHR Funding Opportunities

Funding and support round-up – February 2017 – [click here](#)

  
**National Institute for  
Health Research**

## Announcing expansion of granting programs to the UK

Two new opportunities for UK-based researchers.

The [UK: Novel Biomarkers 2017](#) granting program supports high-risk, high-reward translational projects on understudied and/or underfunded biomarkers in clinical samples/data or patients. Projects can request up to £333,000 over up to 3 years, and applications close 19 April 2017.

Nominations are open for the [Weston Brain Institute Outstanding Achievement Award 2017](#), which honours a UK-based investigator who has made exceptional advances in the field of translational research to accelerate the development of therapeutics for neurodegenerative diseases of aging. The winner of this prestigious award will receive a £25,000 prize.

For more information, please [visit our website](#) or contact [alexandra.stewart@weston.ca](mailto:alexandra.stewart@weston.ca)

 **WESTON**  
BRAIN INSTITUTE

## 5. Events

### International Clinical Trials Day 2017 (ICT Day)

ICT Day takes place on or around **20<sup>th</sup> May** every year – Look out for more information about UHBristol plans, coming soon.

The NIHR campaign objectives this year are:

- Raise awareness and understanding among healthcare professionals and patients of the importance of research in everyday care
- Increase traffic to a range of opportunities to get involved in research (e.g. UKCTG website)
- Encourage patients and the public to ask about taking part in clinical research
- Encourage healthcare professionals to promote research opportunities
- Highlight how easy it is to find out about and take part in healthcare research, from speaking to your doctor or nurse, signing up to Join Dementia Research, reviewing a topic that will help shape clinical studies, and finding out about trials in your area of interest on the UK Clinical Trials Gateway (UKCTG)

  
University Hospitals Bristol  
NHS Foundation Trust

  
**National Institute for  
Health Research**

## 6. Training & Employment Opportunities

### CLAHRC training courses

A number of upcoming [training courses at NIHR CLAHRC West](#)

**CLAHRC West**

  
**National Institute for  
Health Research**

- How to win at Twitter
- Basic statistics and data analysis
- Critical appraisal for healthcare professionals
- Public health economics and social return on investment for the real world
- Realist evaluation: an introduction
- Getting your article published: a two day course
- Logic models: building the foundations for successful evaluation projects - a one day workshop

Click on link above for dates and more details.

If you have any questions, you can email the CLAHRC West Capacity Building Team at [clahrcwest-training@nihr.ac.uk](mailto:clahrcwest-training@nihr.ac.uk)

[Go to top](#)