

How many different kinds of members of staff can you spot?

Tick the boxes next to the ones you've seen!

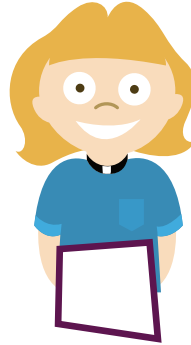
Radiologist



Surgeon



Chaplain



Cleaner



Matron



Nurse



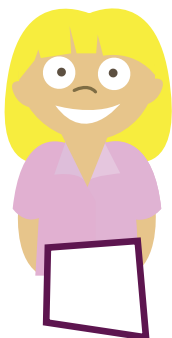
Play specialist



Scout leader



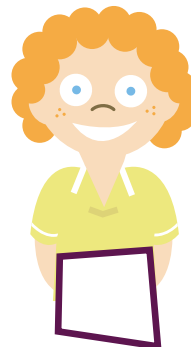
Receptionist



Ward sister / charge nurse



Housekeeper



Hospital teacher



Music therapist



Physiotherapist



Doctor



Porter

