



University Hospitals Bristol **NHS**

NHS Foundation Trust

Patient Information Service
Bristol Royal Hospital for Children

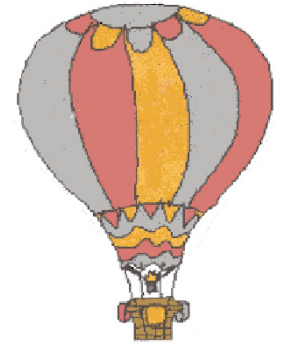
Play Department



Respecting everyone
Embracing change
Recognising success
Working together
Our hospitals.

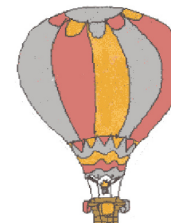


Above + Beyond 
For Patients. For Health. For Bristol.



Play Department

- The Play Department provides activities and support for children in hospital.
- We aim to make it possible for children to play according to their age and to meet their emotional, developmental and cultural needs while in hospital.
- We provide a safe and welcoming play environment for patients and their brothers and sisters.
- We plan to enable children to understand some of the situations and procedures they will encounter. We support this through preparation and play activities.
- We work in close co-operation with the multi-disciplinary team to provide the best service possible.
- Above all we intend to be a support to all our visitors and to enable the children to have fun through positive experiences.

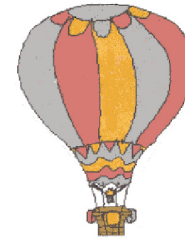
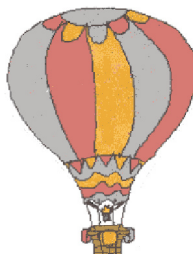
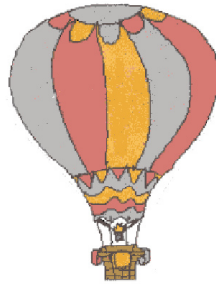


Who are we?

- The play service is managed by the Play Department Manager.
- The play specialists hold relevant professional qualifications in child care and many have attained Edexcel Level 4 BTEC Professional Diploma in specialised play for sick children and young people. Play assistants help us in providing safe, appropriate play environments.
- Staff are encouraged to continue their professional development by attending courses and study days.
- We support relevant colleges by providing a variety of student placements on the ward and in the play centre.

Where can you find us?

- The Play Department's central base is a large purpose-built and well-equipped play centre which is clearly sign posted in the hospital at the rear of Level 5.
- Daily play and craft sessions are held here.
- There are playrooms and play areas on all wards. Play facilities are also provided in outpatient clinics, consulting rooms, waiting areas and the Emergency Department

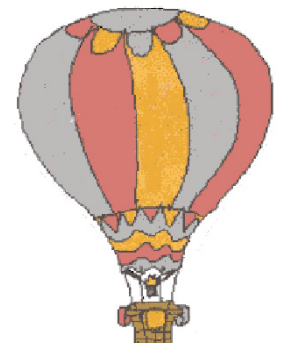


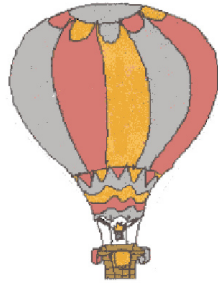
What do we do?

- The play staff encourage children to play with familiar toys and join in with activities.
- By providing these facilities we aim to encourage normality and make the children's stay with us as positive as we can.
- We try to make the children feel relaxed and happy while they are away from home.

Play preparation for hospital procedures

- Using specially designed play packages, qualified and trained play staff prepare children before procedures such as going to theatre, having scans and Hickman catheters.
- This helps children to cope and become more confident.



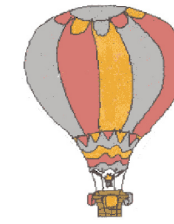
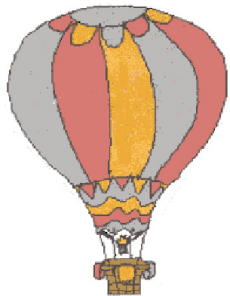


Post-procedural play

- This enables children to work through the hospital experience. It helps them to cope in a safe, happy and friendly environment.
- Procedures can be explained in a way appropriate to the age of the child.

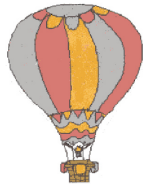
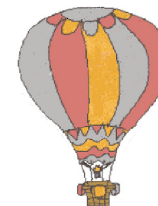
Distraction play therapy

- This helps children to gain control of their anxieties during invasive or frightening procedures.
- A variety of techniques can be used including puppets and stories.
- Children benefit by diversion from the hospital environment by participating in social play sessions.

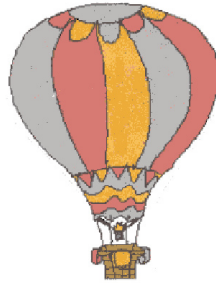


When do we play?

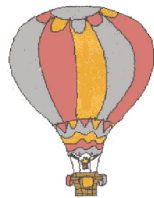
- Throughout the hospital you will see timetables clearly displaying opening times and evenings in the play centre.
- Please check for variations to the programme at the play centre and look out for notices of special entertainment and events!
- Staff will provide activity sessions in the ward play areas and we can come to any children being nursed in isolation.
- Play staff are around between 8am and 4.30pm from Monday to Friday.
- A team of voluntary staff supports our work in the play centre and waiting areas.
- In the evening and at weekends the Radio Lollipop team provides a service whenever possible.
- A Guide and Scout group runs on Friday evenings.



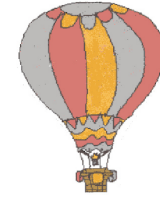
Pre-admission programmes



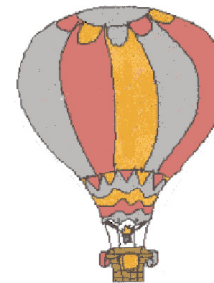
- Currently there are pre-admission programmes available for planned ENT surgery which run during each week.
- A cardiac pre-admission and a renal pre-admission programme is run on a weekly basis within the Outpatient Department.
- In all cases, play sessions aim to prepare children for the hospital experience and the children are encouraged to participate and ask questions.
- Families will have a tour of the hospital to familiarise themselves with the environment and see the ward area. This makes the forthcoming visit less daunting.

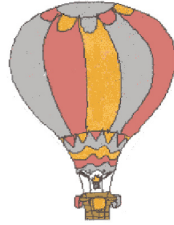


Family support



- The Play Department works closely with other members of the multi-disciplinary team: the physiotherapists, social workers, dietitians and the medical and nursing staff.
- Working with the family unit means we can give support, advice and practical help. We may carry out a needs or developmental assessment and prepare an individual play programme.
- Occasionally some staff are able to participate in home visits to provide support within the home environment.





Contact numbers

The hospital telephone numbers for the Play Department are:

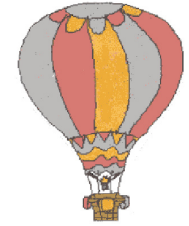
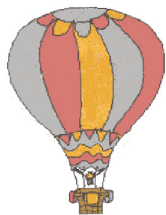
Play centre 0117 342 8531

Play centre office 0117 342 8194

The Play Department Manager can be contacted on bleep number 2228, the Renal HPS on 3068 and the Accident and Emergency HPS on 2363.

All the numbers can be reached through the Hospital switchboard.

			Bleep
Cardiac/Surgical playroom	Level 6	8784	3438
Medical playroom	Level 5	8775	3437
Oncology	Level 5	8776	2228
Oncology play office	Level 6	8786	2228
Adolescent	Level 5	8335	2363
Renal	Level 4	8627	3068
Short Stay Surgery	Level 4	8336	



Other useful numbers/notes:

Play centre timetable



Please fill in what's happening during your stay in the hospital

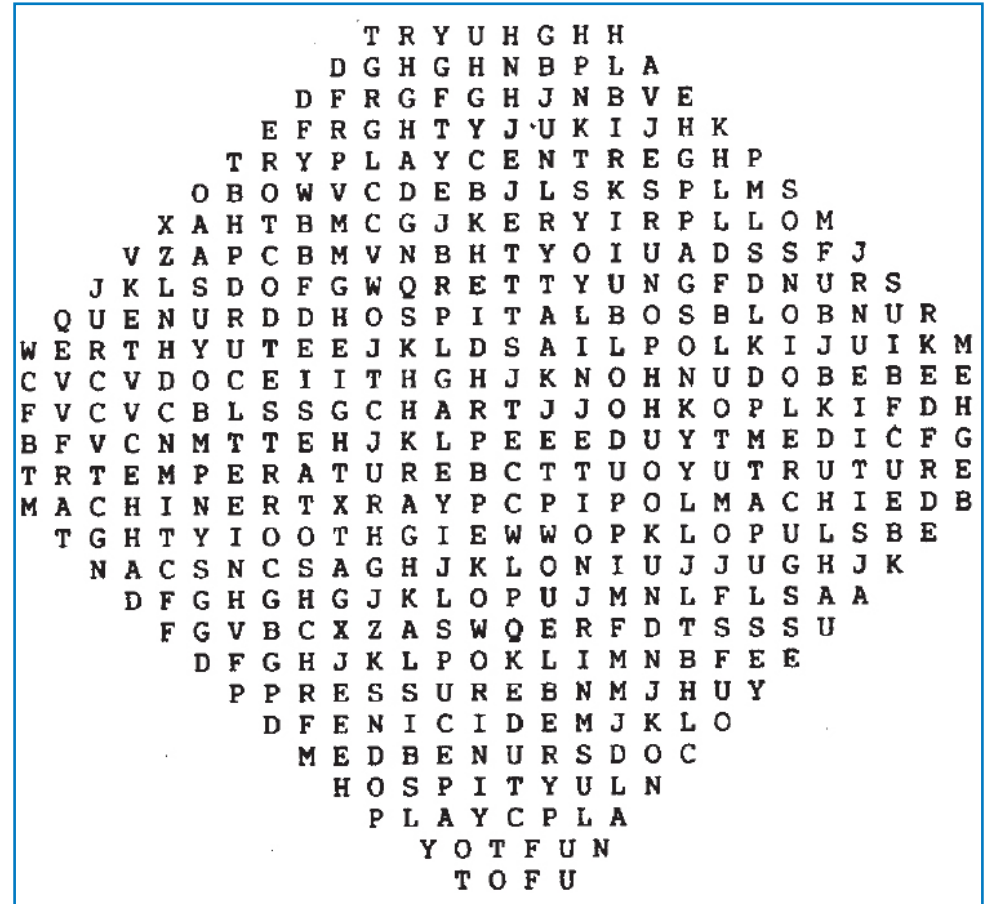
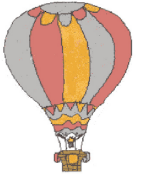
Day	Morning	Afternoon	Evening
Mon			
Tues			
Wed			
Thurs			
Fri			
Sat			

Look out for:

- PAT Dogs - visit us each month.
- POD entertainers provide fun shows for us.
- Radio Lollipop: opening times are subject to change depending on numbers of volunteers.
- The Scout Troop run sessions each week.



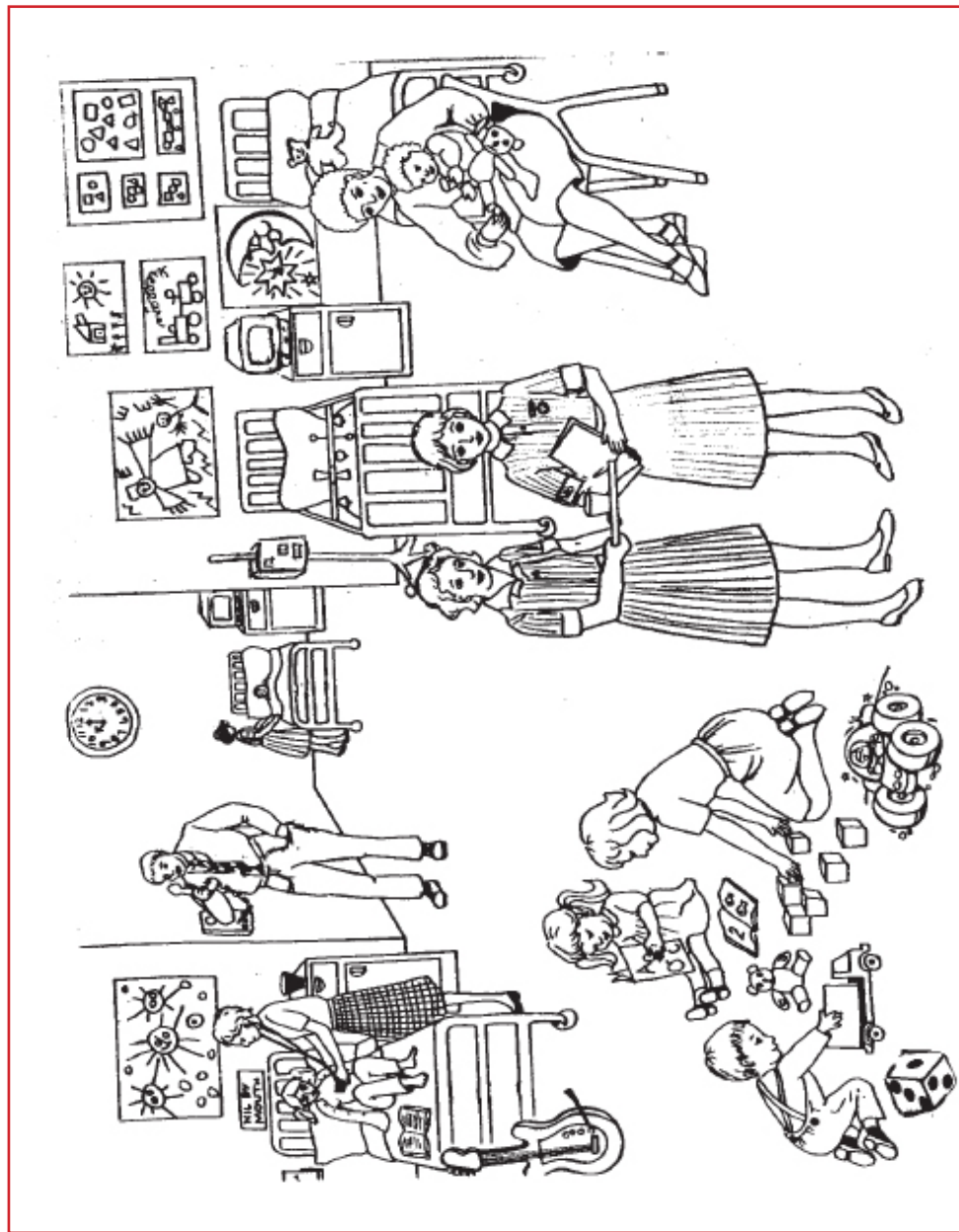
Wordsearch



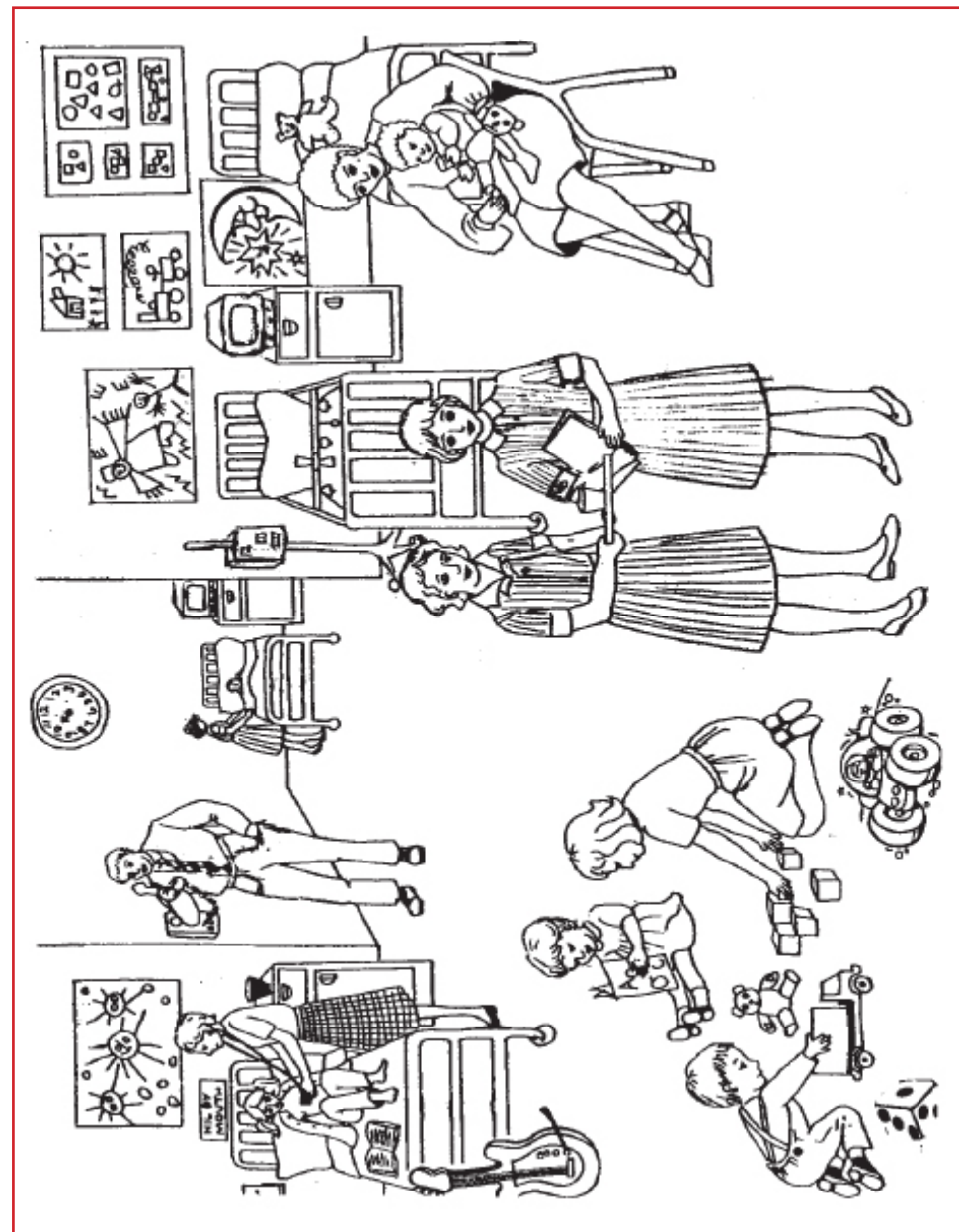
Can you find:

HOSPITAL, BED, NURSE, DOCTOR, PLAYCENTRE, BLOOD, HEIGHT, WEIGHT, XRAY, PULSE, TEMPERATURE, CHART, TEST, INJECTION, PRESSURE, SCAN, MEDICINE, MACHINE, TOY AND FUN?

Spot the difference



There are 10 differences in these two pictures - can you find them?





For access to other patient leaflets and information
please go to the following address:

**[www.uhbristol.nhs.uk/patients-visitors-and-carers/
patient-information.html](http://www.uhbristol.nhs.uk/patients-visitors-and-carers/patient-information.html)**

Hospital Switchboard: 0117 923 0000



Minicom: 0117 934 9869



www.uhbristol.nhs.uk



For an Interpreter or Signer please contact the
telephone number on your appointment letter.



For this leaflet in Large Print, Braille, Audio, or
Email, please call the Patient Information Service:
0117 342 3728 / 3725

