

Gynaecological Oncology Course 2012

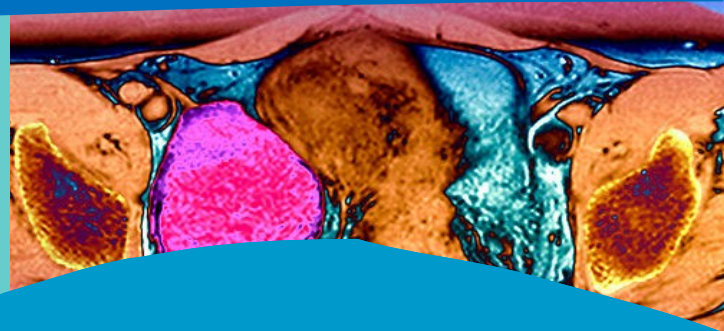
Block One

1st, 2nd, 3rd February 2012

Block Two

29th Feb, 1st, 2nd March 2012

Aves Kilsby Meeting Room
Level 4 . Bristol Haematology
and Oncology Centre



Psychological Dilemma at
Diagnosis . Investigations

Introduction to Brachytherapy . Diagnostic surgery in

Gynaecological Cancers . Chemo Radiotherapy

Palliative Care . Lymphedema Management . Patient Support

Homeopathy . Follow up Clinics

Academic accreditation
can be obtained. Most univer-
sities will agree to 20 module
credits at M level.

The Course is suitable for:
GPs, AHPs, radiographers,
specialist nurses, and

Junior Doctors

If you are interested in finding out more information or taking part in one or
both of the course blocks, please visit us online:

www.uhbristol.nhs.uk/patients-and-visitors/your-hospitals/bhoc/news-and-events/

Or contact: hoda.booz@uhbristol.nhs.uk